

GOCHARTING ORDER FLOW TRADING COURSE

Lesson 4

Order Flow Terms

By: Michael Valtos
Orderflows.com

Glossary of order flow terms and their meaning.

There are many words specific to order flow that aren't seen in other forms of technical or fundamental analysis. I am going to explain them upfront so you can understand them so you will have a glossary to refer to as you go through this course. I don't want you to get stuck on something because you don't understand what a term means or what I am talking about.

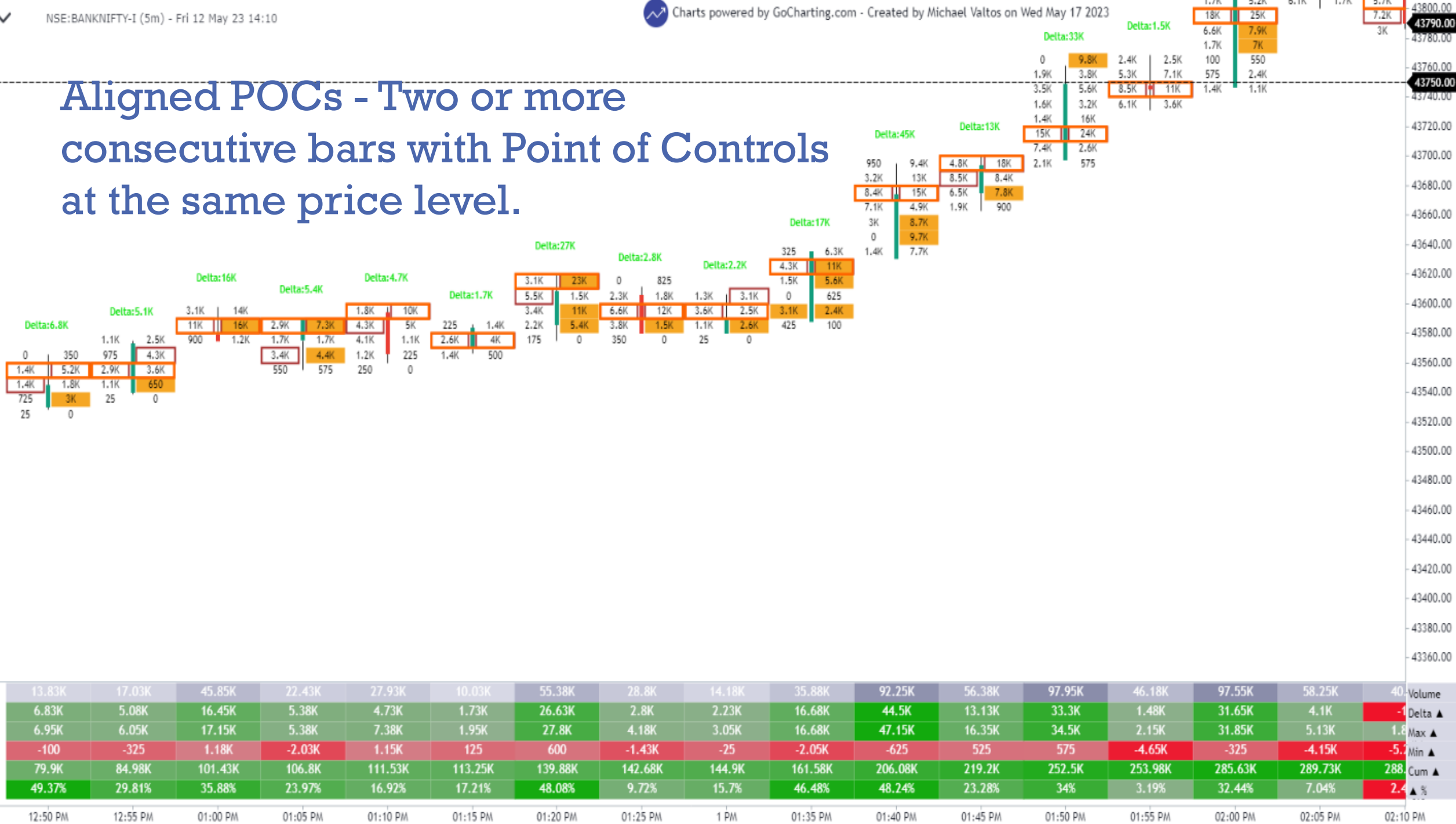
Aggressive Buyers - Traders who buy at the market, buy from the offer. They cross the bid-offer and buy the offer.

0	2.3K
425	2.8K
4.3K	6K
6.2K	7.9K
7.7K	3.7K
4.1K	7.8K
6K	8.6K
11K	4.4K
8.2K	2.7K
6K	0

Aggressive Sellers - Traders who sell at the market, sell into the bid. They cross the bid-offer and sell the bid.

0	50
250	950
1.4K	1.3K
1.2K	250
800	225
400	0
2K	350
350	0

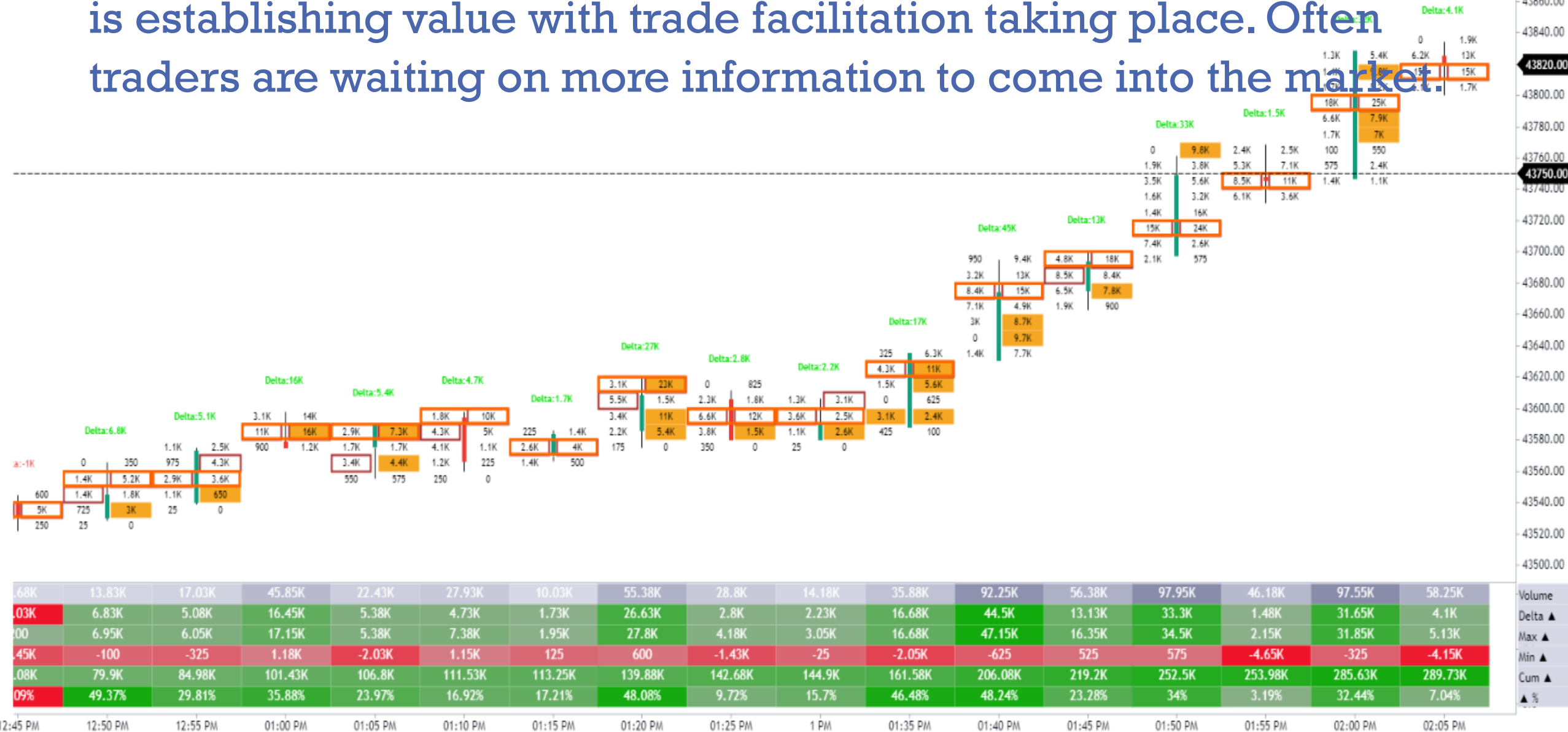
Aligned POCs - Two or more consecutive bars with Point of Controls at the same price level.



Ask - The current price traders are willing to sell. Also called the offer.

Trades		DOM		Orders	
1.08		Grouping: 0.0001		1.08	
Bid	Buy	Price	Sell	Ask	
56		1.0866		53	
		1.0865			
		1.0864			
		1.0863			
		1.0862			
		1.0861			
		1.086			
		1.0859			
		1.0858			
		1.0857			
		1.0856			
		1.0855			
		1.0854			
		1.0853			
		1.0852			
		1.0851			
		1.085			
		1.0849			
		1.0848			
		1.0847			
	1.0846				
	1.0845				
	1.0844				
	1.0843				
	1.0842		149		
	125	1.0841	110		
	239	1.084	703		
	1.61K	1.0839			
		1.0838			
		1.0837			
		1.0836			
		1.0835			
		1.0834			
		1.0833			
		1.0832			
		1.0831			
		1.083			

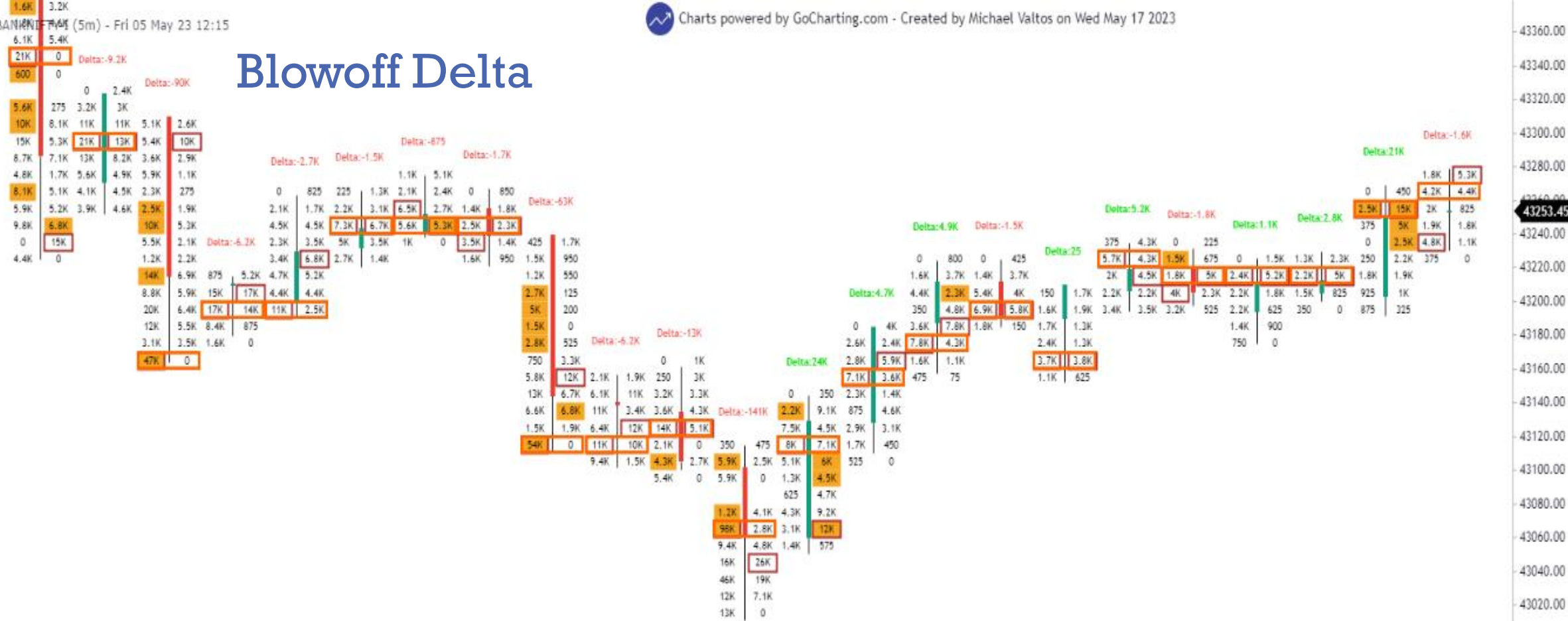
Balance - Area where two-sided trade takes place, and the market is establishing value with trade facilitation taking place. Often traders are waiting on more information to come into the market.



Bid - The current price traders are willing to pay.

Trades		DOM	Orders	
1.08		Grouping: 0.0001		1.08
Bid	Buy	Price	Sell	Ask
56		1.0866		53
		1.0865		
		1.0864		
		1.0863		
		1.0862		
		1.0861		
		1.086		
		1.0859		
		1.0858		
		1.0857		
		1.0856		
		1.0855		
		1.0854		
		1.0853		
		1.0852		
		1.0851		
		1.085		
		1.0849		
		1.0848		
		1.0847		
	1.0846			
	1.0845			
	1.0844			
	1.0843			
	1.0842	149		
	125	1.0841	110	
	239	1.084	703	
	1.61K	1.0839		
		1.0838		
		1.0837		
		1.0836		
		1.0835		
		1.0834		
		1.0833		
		1.0832		
		1.0831		
		1.083		

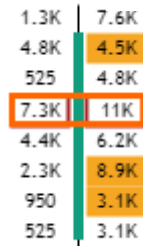
Blowoff Delta



Blowoff Delta - Abnormally high delta number that occurs at a high or low. Seen in capitulation or FOMO.

8.7K	60.53K	203.2K	112.53K	203.58K	79.13K	61.38K	33.43K	31.83K	16.23K	131.25K	85.98K	51.78K	274.98K	91.15K	46.1K	44.65K	29.58K	21.03K	32.3K	19.08K	18.78K	13.4K	34.7K	28.38K
-100	-19.58K	-46.4K	-9.18K	-90.23K	-6.18K	-2.73K	-1.53K	-875	-1.73K	-62.8K	-6.18K	-13.23K	-140.78K	24.25K	4.7K	4.9K	-1.48K	25	5.15K	-1.78K	1.13K	2.75K	21.4K	-1.63K
1.7K	300	3.7K	4.1K	2.35K	-150	3.1K	675	5.58K	625	1.08K	2.5K	2K	-650	27.53K	4.7K	8.6K	675	825	6.05K	1.43K	2K	3.35K	22.68K	6.18K
-225	-20.63K	-67.43K	-10.5K	-96.5K	-9.5K	-6.05K	-2.43K	-1.15K	-2.43K	-65.28K	-10.53K	-14.18K	-146.85K	-2.35K	-1.55K	250	-2.7K	-2.9K	-200	-2K	-3K	-100	-550	-2.5K
83.05K	63.48K	17.08K	7.9K	-82.32K	-88.5K	-91.22K	-92.75K	-93.62K	-95.35K	-158.15K	-164.32K	-177.55K	-318.32K	-294.07K	-289.37K	-284.47K	-285.95K	-285.92K	-280.77K	-282.55K	-281.42K	-278.67K	-257.27K	-258.9K
1.15%	32.34%	22.83%	8.15%	44.32%	7.8%	4.44%	4.56%	2.75%	10.63%	47.85%	7.18%	25.54%	51.2%	26.6%	10.2%	10.97%	4.99%	0.12%	15.94%	9.31%	5.99%	20.52%	61.67%	5.73%

Buying Imbalance - When aggressive buyers outnumber aggressive sellers in the two-way auction by a predetermined ratio, usually 4-1 (400%).



NSE:BA... (5m) - Fri 05 May 23 12:15

Capitulation - When traders just throw in the towel on a position because they can't take the heat of the trade anymore. Opposite is FOMO.



8.7K	60.53K	203.2K	112.53K	203.58K	79.13K	61.38K	33.43K	31.83K	16.23K	131.25K	85.98K	51.78K	274.98K	91.15K	46.1K	44.65K	29.58K	21.03K	32.3K	19.08K	18.78K	13.4K	34.7K	28.38K
-100	-19.58K	-46.4K	-9.18K	-90.23K	-6.18K	-2.73K	-1.53K	-875	-1.73K	-62.8K	-6.18K	-13.23K	-140.78K	24.25K	4.7K	4.9K	-1.48K	25	5.15K	-1.78K	1.13K	2.75K	21.4K	-1.63K
1.7K	300	3.7K	4.1K	2.35K	-150	3.1K	675	5.58K	625	1.08K	2.5K	2K	-650	27.53K	4.7K	8.6K	675	825	6.05K	1.43K	2K	3.35K	22.68K	6.18K
-225	-20.63K	-67.43K	-10.5K	-96.5K	-9.5K	-6.05K	-2.43K	-1.15K	-2.43K	-65.28K	-10.53K	-14.18K	-146.85K	-2.35K	-1.55K	250	-2.7K	-2.9K	-200	-2K	-3K	-100	-550	-2.5K
83.05K	63.48K	17.08K	7.9K	-82.32K	-88.5K	-91.22K	-92.75K	-93.62K	-95.35K	-158.15K	-164.32K	-177.55K	-318.32K	-294.07K	-289.37K	-284.47K	-285.95K	-285.92K	-280.77K	-282.55K	-281.42K	-278.67K	-257.27K	-258.9K
1.15%	32.34%	22.83%	8.15%	44.32%	7.8%	4.44%	4.56%	2.75%	10.63%	47.85%	7.18%	25.54%	51.2%	26.6%	10.2%	10.97%	4.99%	0.12%	15.94%	9.31%	5.99%	20.52%	61.67%	5.73%

10:55 AM 11:00 AM 11:05 AM 11:10 AM 11:15 AM 11:20 AM 11:25 AM 11 AM 11:35 AM 11:40 AM 11:45 AM 11:50 AM 11:55 AM 12:00 PM 12:05 PM 12:10 PM 12:15 PM 12:20 PM 12:25 PM 12 PM 12:35 PM 12:40 PM 12:45 PM 12:50 PM 12:55 PM

Volume
Delta ▲
Max ▲
Min ▲
Cum ▲
▲ %

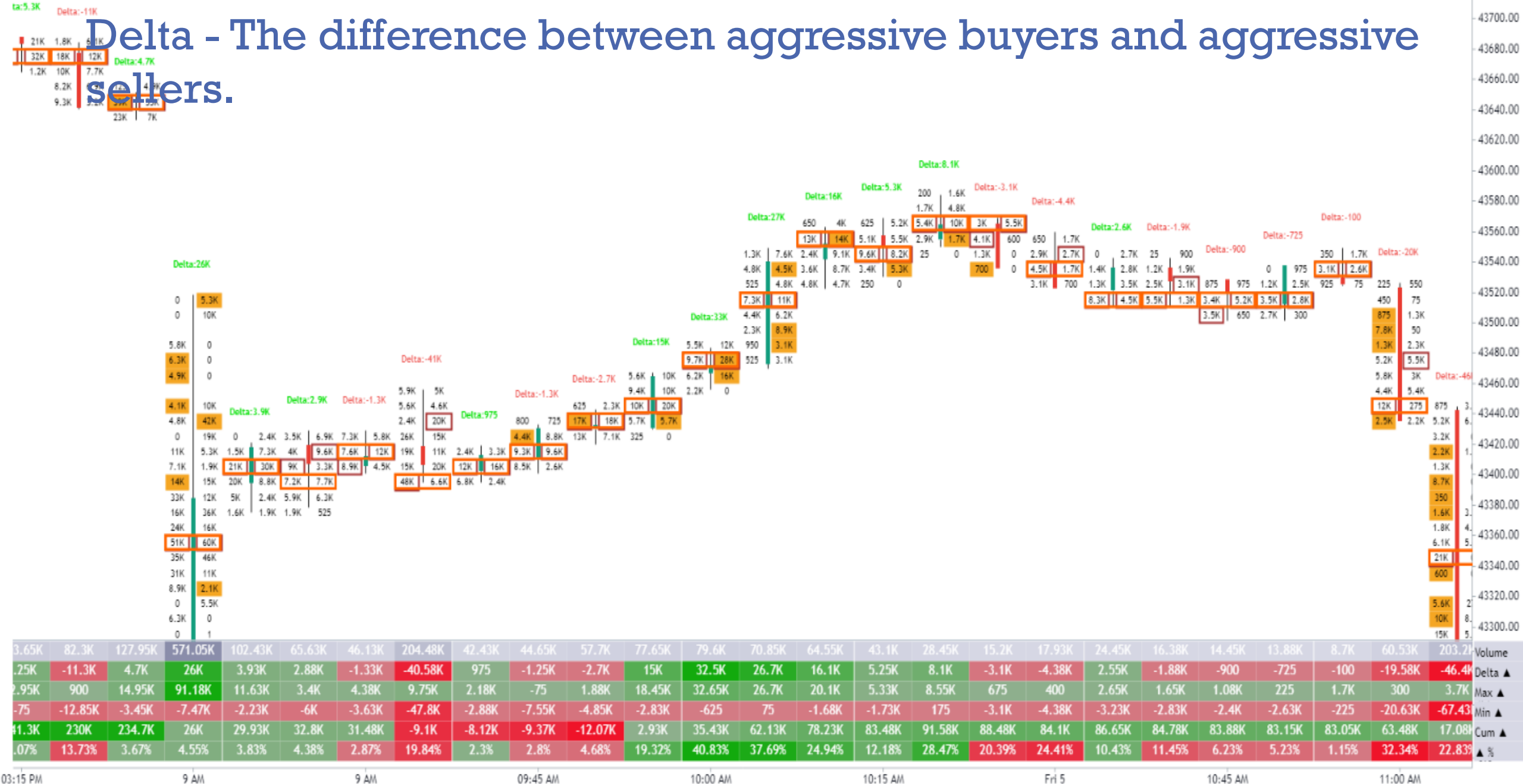
43360.00
43340.00
43320.00
43300.00
43280.00
43260.00
43253.45
43240.00
43220.00
43200.00
43180.00
43160.00
43140.00
43120.00
43100.00
43080.00
43060.00
43040.00
43020.00
43000.00
42980.00
42960.00
42940.00
42920.00

Cumulative Delta - The trading session's accumulation of delta.

Indicates to a trader if the session is dominated by net aggressive buyers or net aggressive sellers.

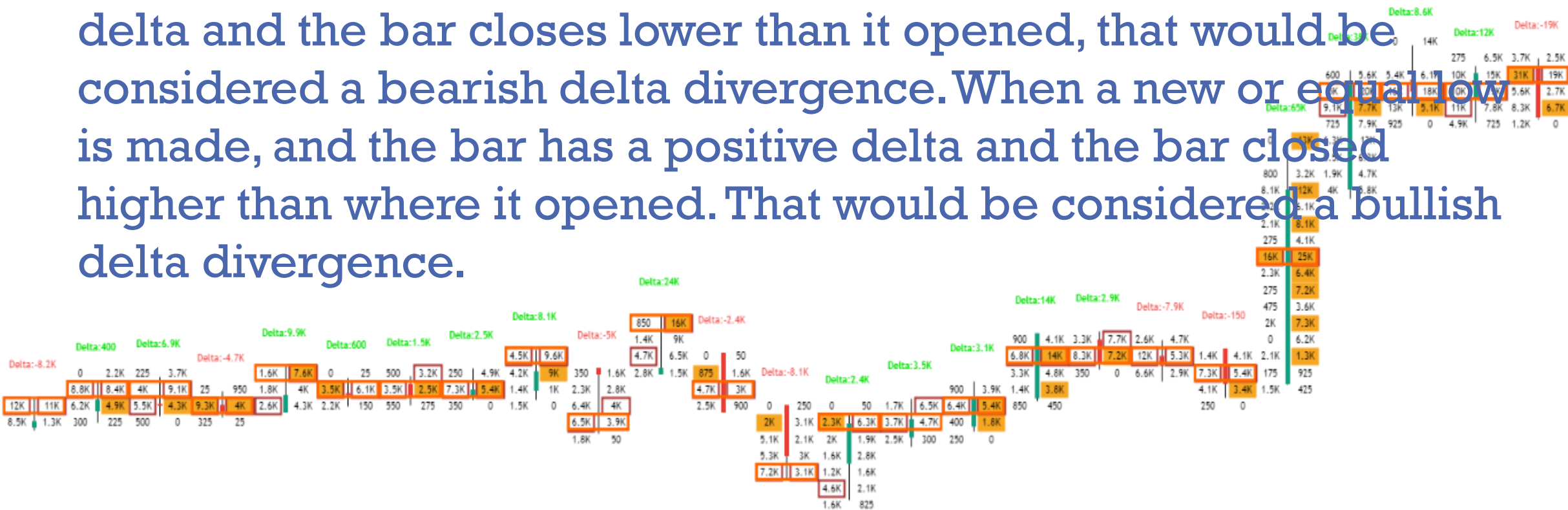


Delta - The difference between aggressive buyers and aggressive sellers.





Delta Divergence - When the bar delta and price are opposite. When a new or equal high is made and the bar has a negative delta and the bar closes lower than it opened, that would be considered a bearish delta divergence. When a new or equal low is made, and the bar has a positive delta and the bar closed higher than where it opened. That would be considered a bullish delta divergence.



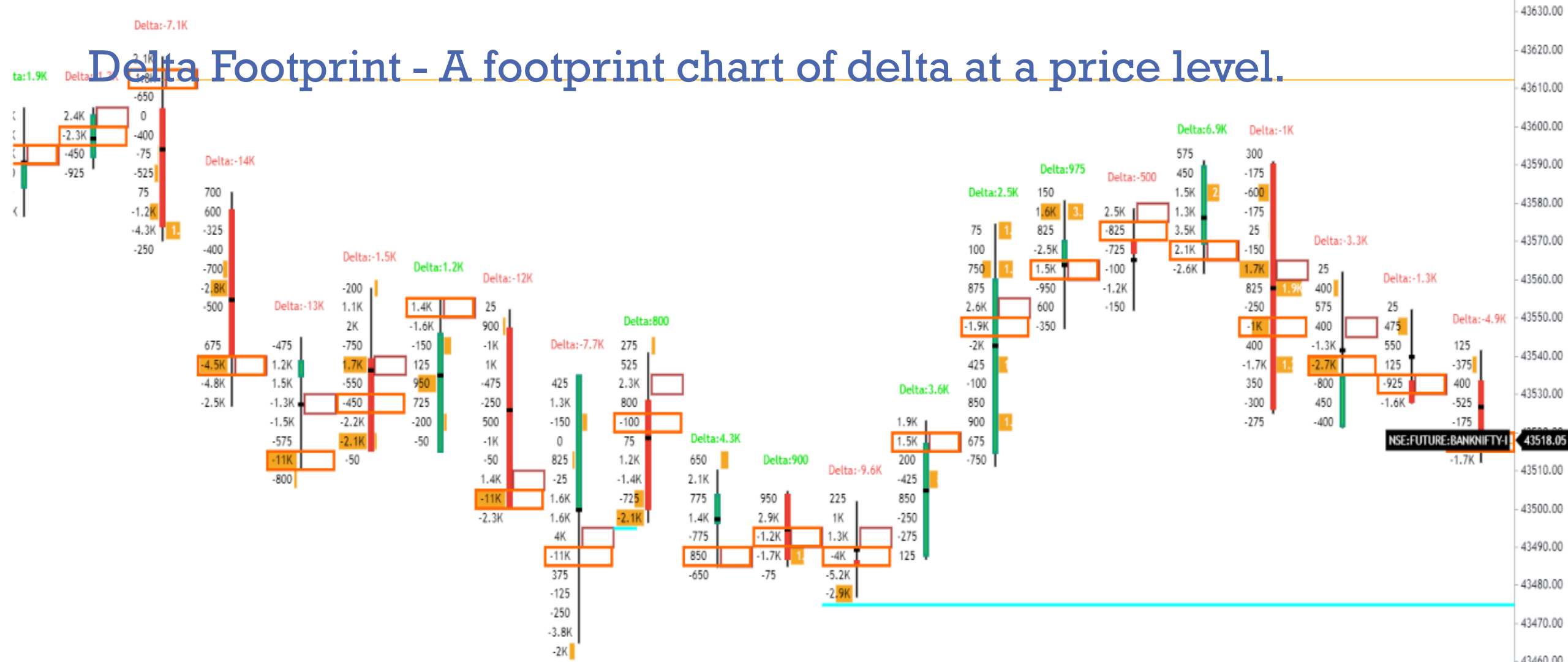
32.95K	31K	27.2K	14.53K	21.78K	11.85K	10.5K	18.18K	31.15K	29.58K	42.98K	13.55K	30.98K	28.68K	19.35K	18.95K	40.25K	26.85K	33.83K	25.85K	142.63K	103.95K	79.4K	85.18K	80K
-8.15K	400	6.9K	-4.68K	9.93K	600	1.45K	2.48K	8.05K	-4.98K	23.63K	-2.4K	-8.08K	2.43K	3.5K	3.1K	13.7K	2.9K	-7.93K	-150	65.43K	38K	8.55K	12.48K	-18.95K
4.13K	8.55K	7.6K	1.13K	11.05K	2.5K	2.58K	5.6K	11.58K	75	24.15K	50	250	3.33K	4.73K	6.18K	13.7K	3.73K	2.95K	650	65.55K	39K	19.63K	17.78K	725
-8.83K	-75	-550	-4.68K	-500	-875	375	-2K	-1.95K	-8.18K	-925	-2.65K	-9.33K	-4.33K	-975	-175	-50	-1.7K	-7.93K	-2.83K	-1.38K	800	-2.85K	-9K	-19.5K
-1.15K	-749	6.15K	1.48K	11.4K	12K	13.45K	15.93K	23.98K	19K	42.63K	40.23K	32.15K	34.58K	38.08K	41.18K	54.88K	57.78K	49.85K	49.7K	115.13K	153.13K	161.68K	174.15K	155.2K
24.73%	1.29%	25.37%	32.19%	45.58%	5.06%	13.81%	13.62%	25.84%	16.82%	54.97%	17.71%	26.07%	8.46%	18.09%	16.36%	34.04%	10.8%	23.43%	0.58%	45.87%	36.56%	10.77%	14.65%	23.69%

01:20 PM 01:25 PM 1 PM 01:35 PM 01:40 PM 01:45 PM 01:50 PM 01:55 PM 02:00 PM 02:05 PM 02:10 PM 02:15 PM 02:20 PM 02:25 PM 2 PM 02:35 PM 02:40 PM 02:45 PM 02:50 PM 02:55 PM 03:00 PM 03:05 PM 03:10 PM 03:15 PM 03:20 PM

43400.00
43380.00
43360.00
43340.00
43320.00
43300.00
43280.00
43260.00
43240.00
43220.00
43200.00
43180.00
43160.00
43140.00
43120.00
43100.00
43080.00
43060.00
43040.00
43020.00
43000.00
42980.00
42960.00

Volume
Delta ▲
Max ▲
Min ▲
Cum ▲
% ▼

Delta Footprint - A footprint chart of delta at a price level.



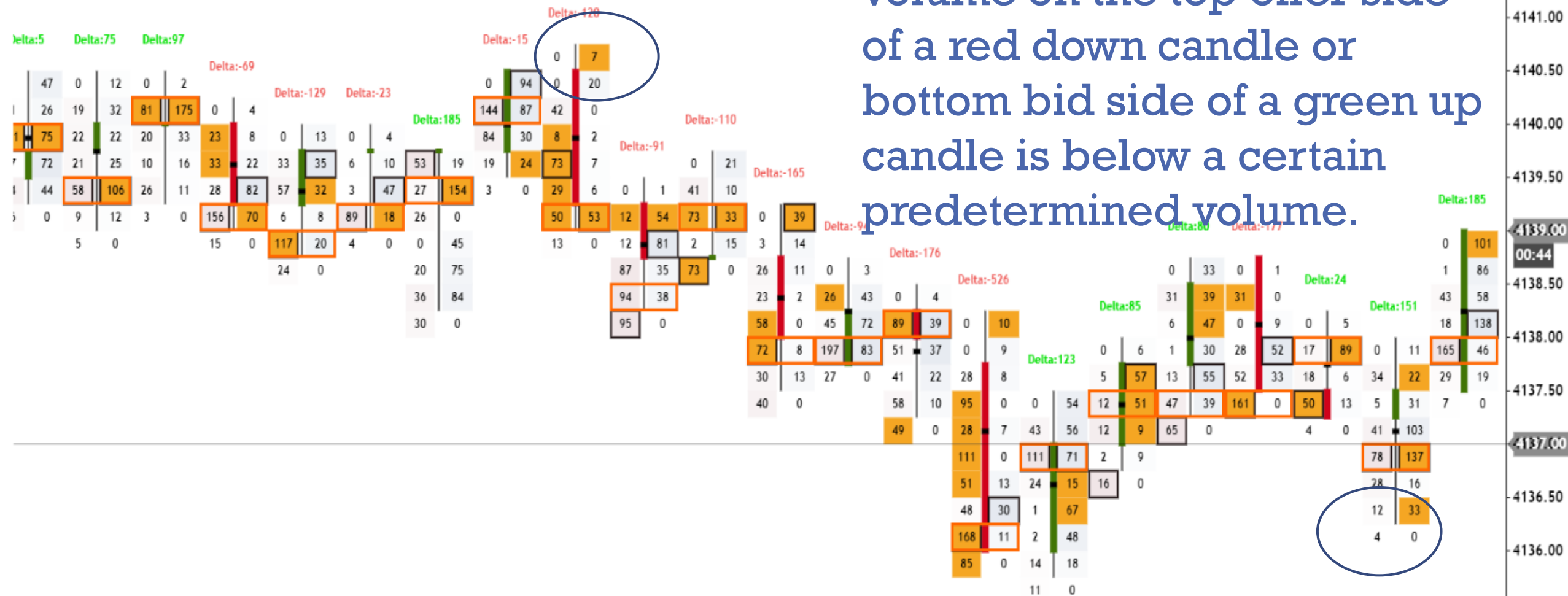
0.25K	26.08K	30.5K	36.25K	45.33K	29.4K	16.08K	32.58K	56.38K	22.15K	19.7K	17.3K	31.08K	18.48K	33.8K	33.48K	18.25K	25.03K	22.85K	18.15K	20.15K	12.5K	Volume
1.9K	-1.23K	-7.05K	-14.45K	-12.53K	-1.45K	1.23K	-12.48K	-7.68K	800	4.3K	900	-9.58K	3.58K	2.5K	975	-500	6.88K	-1K	-3.3K	-1.3K	-4.9K	Delta ▲
3.38K	2.08K	2.3K	1K	875	3.68K	2.33K	475	750	3.75K	4.3K	2.45K	700	3.65K	5.6K	3.2K	775	7.38K	1.78K	1.85K	525	300	Max ▲
1.28K	-2.05K	-7.33K	-17.38K	-14.8K	-1.68K	-50	-12.75K	-12.2K	-1.35K	-1.03K	25	-12.48K	-300	-775	-1.9K	-1.8K	-2.03K	-2.03K	-3.3K	-1.93K	-5.33K	Min ▲
31.65K	-282.88K	-289.93K	-304.38K	-316.9K	-318.35K	-317.13K	-329.6K	-337.28K	-336.48K	-332.18K	-331.28K	-340.85K	-337.28K	-334.78K	-333.8K	-334.3K	-327.43K	-328.43K	-331.73K	-333.03K	-337.93K	Cum ▲
3.72%	4.7%	23.11%	39.86%	27.63%	4.93%	7.62%	38.3%	13.61%	3.61%	21.83%	5.2%	30.81%	19.35%	7.4%	2.91%	2.74%	27.47%	4.38%	18.18%	6.45%	39.2%	▲ %
12:35 PM	12:40 PM	12:45 PM	12:50 PM	12:55 PM	01:00 PM	01:05 PM	01:10 PM	01:15 PM	01:20 PM	01:25 PM	1 PM	01:35 PM	01:40 PM	01:45 PM	01:50 PM	01:55 PM	02:00 PM	02:05 PM	02:10 PM	02:15 PM	02:20 PM	

DOM - Depth of Market. A tool that shows the bid volumes and offer volumes at each price level.



CME Open

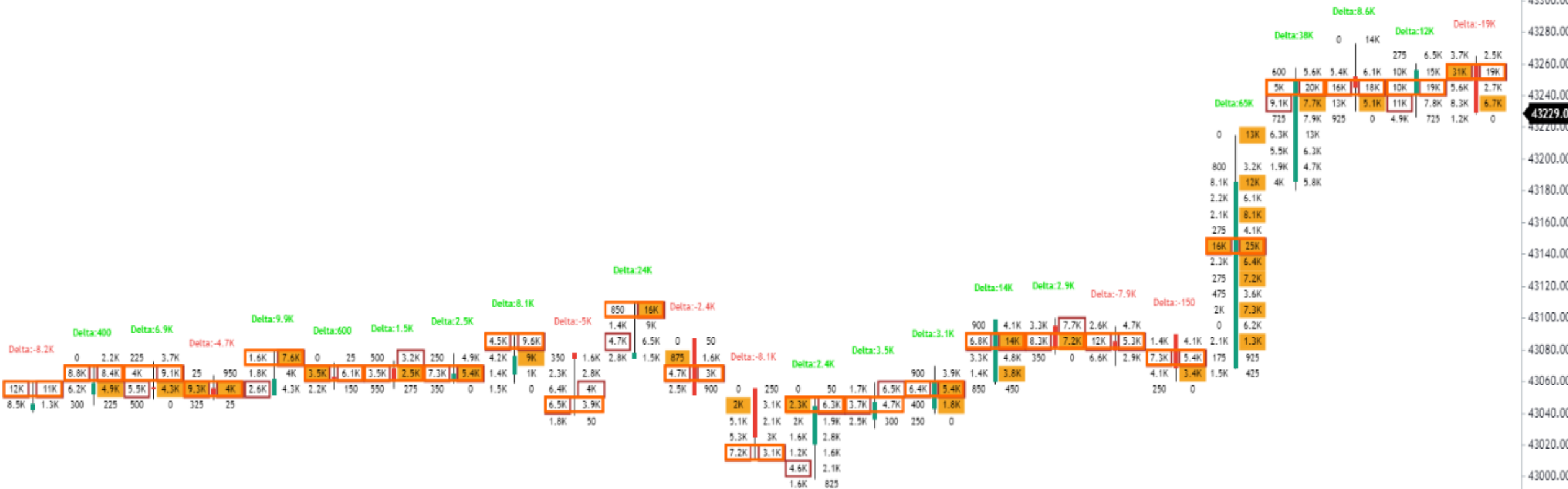
Exhaustion Print - When the volume on the top offer side of a red down candle or bottom bid side of a green up candle is below a certain predetermined volume.



523	343	377	441	345	181	569	485	310	509	268	339	496	400	702	535	179	406	367	202	555	711
5	75	97	-69	-129	-23	185	-15	-120	-91	-110	-165	-94	-176	-526	123	85	80	-177	24	151	185
98	103	97	5	-1	1	192	37	20	63	53	30	41	-3	12	166	88	87	2	56	179	185
-54	-65	-50	-83	-139	-86	-59	-54	-156	-123	-112	-182	-115	-238	-526	-22	-8	-38	-180	-18	-40	-91
12.26K	-12.18K	-12.08K	-12.15K	-12.28K	-12.3K	-12.12K	-12.13K	-12.25K	-12.35K	-12.46K	-12.62K	-12.71K	-12.89K	-13.42K	-13.29K	-13.21K	-13.13K	-13.31K	-13.28K	-13.13K	-12.95K



Footprint Chart - A chart that plots the volume traded on the bid and the volume that traded on the offer at each price.



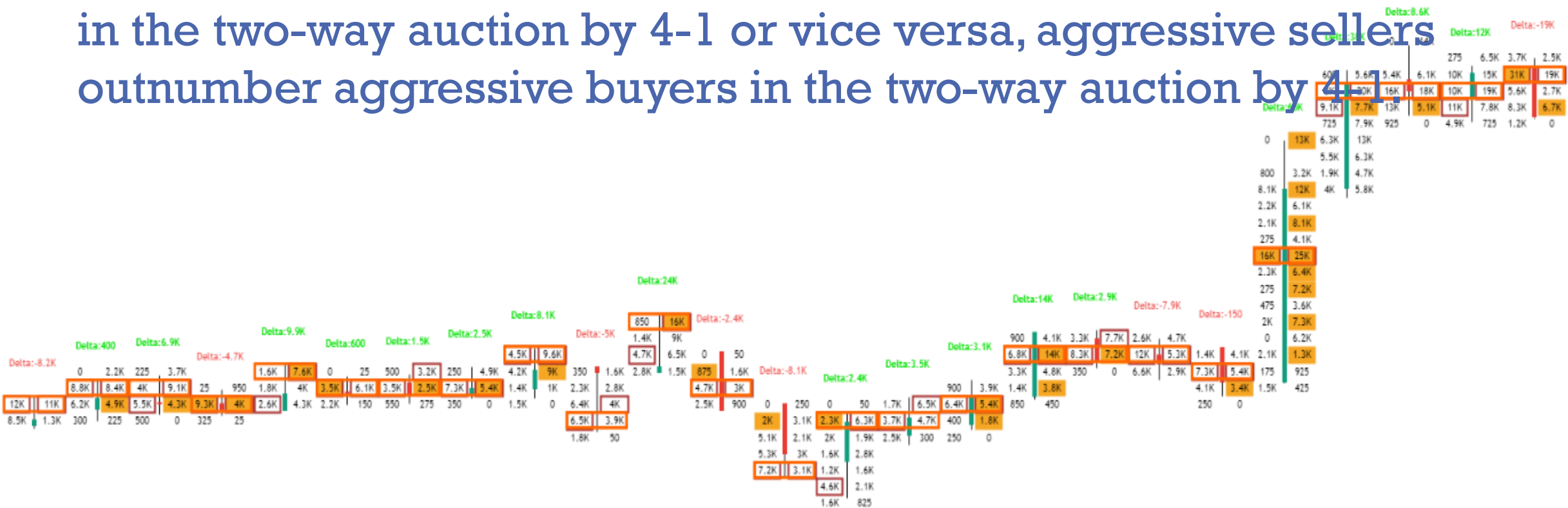
32.95K	31K	27.2K	14.53K	21.78K	11.85K	10.5K	18.18K	31.15K	29.58K	42.98K	13.55K	30.98K	28.68K	19.35K	18.95K	40.25K	26.85K	33.83K	25.85K	142.63K	103.95K	79.4K	85.18K	80K
-8.15K	400	6.9K	-4.68K	9.93K	600	1.45K	2.48K	8.05K	-4.98K	23.63K	-2.4K	-8.08K	2.43K	3.5K	3.1K	13.7K	2.9K	-7.93K	-150	65.43K	38K	8.55K	12.48K	-18.95K
4.13K	8.55K	7.6K	1.13K	11.05K	2.5K	2.58K	5.6K	11.58K	75	24.15K	50	250	3.33K	4.73K	6.18K	13.7K	3.73K	2.95K	650	65.55K	39K	19.63K	17.78K	725
-8.83K	-75	-550	-4.68K	-500	-875	375	-2K	-1.95K	-8.18K	-925	-2.65K	-9.33K	-4.33K	-975	-175	-50	-1.7K	-7.93K	-2.83K	-1.38K	800	-2.85K	-9K	-19.5K
-1.15K	-749	6.15K	1.48K	11.4K	12K	13.45K	15.93K	23.98K	19K	42.63K	40.23K	32.15K	34.58K	38.08K	41.18K	54.88K	57.78K	49.85K	49.7K	115.13K	153.13K	161.68K	174.15K	155.2K
24.73%	1.29%	25.37%	32.19%	45.58%	5.06%	13.81%	13.62%	25.84%	16.82%	54.97%	17.71%	26.07%	8.46%	18.09%	16.36%	34.04%	10.8%	23.43%	0.58%	45.87%	36.56%	10.77%	14.65%	23.69%
01:20 PM	01:25 PM	1 PM	01:35 PM	01:40 PM	01:45 PM	01:50 PM	01:55 PM	02:00 PM	02:05 PM	02:10 PM	02:15 PM	02:20 PM	02:25 PM	2 PM	02:35 PM	02:40 PM	02:45 PM	02:50 PM	02:55 PM	03:00 PM	03:05 PM	03:10 PM	03:15 PM	03:20 PM

43400.00
43380.00
43360.00
43340.00
43320.00
43300.00
43280.00
43260.00
43240.00
43229.00
43220.00
43200.00
43180.00
43160.00
43140.00
43120.00
43100.00
43080.00
43060.00
43040.00
43020.00
43000.00
42980.00
42960.00

Volume
Delta ▲
Max ▲
Min ▲
Cum ▲
% ▼



Imbalance - When aggressive trading is dominated by one side over the other. If aggressive buyers outnumber aggressive sellers in the two-way auction by 4-1 or vice versa, aggressive sellers outnumber aggressive buyers in the two-way auction by 4-1



32.95K	31K	27.2K	14.53K	21.78K	11.85K	10.5K	18.18K	31.15K	29.58K	42.98K	13.55K	30.98K	28.68K	19.35K	18.95K	40.25K	26.85K	33.83K	25.85K	142.63K	103.95K	79.4K	85.18K	80K
-8.15K	400	6.9K	-4.68K	9.93K	600	1.45K	2.48K	8.05K	-4.98K	23.63K	-2.4K	-8.08K	2.43K	3.5K	3.1K	13.7K	2.9K	-7.93K	-150	65.43K	38K	8.55K	12.48K	-18.95K
4.13K	8.55K	7.6K	1.13K	11.05K	2.5K	2.58K	5.6K	11.58K	75	24.15K	50	250	3.33K	4.73K	6.18K	13.7K	3.73K	2.95K	650	65.55K	39K	19.63K	17.78K	725
-8.83K	-75	-550	-4.68K	-500	-875	375	-2K	-1.95K	-8.18K	-925	-2.65K	-9.33K	-4.33K	-975	-175	-50	-1.7K	-7.93K	-2.83K	-1.38K	800	-2.85K	-9K	-19.5K
-1.15K	-749	6.15K	1.48K	11.4K	12K	13.45K	15.93K	23.98K	19K	42.63K	40.23K	32.15K	34.58K	38.08K	41.18K	54.88K	57.78K	49.85K	49.7K	115.13K	153.13K	161.68K	174.15K	155.2K
24.73%	1.29%	25.37%	32.19%	45.58%	5.06%	13.81%	13.62%	25.84%	16.82%	54.97%	17.71%	26.07%	8.46%	18.09%	16.36%	34.04%	10.8%	23.43%	0.58%	45.87%	36.56%	10.77%	14.65%	23.69%
01:20 PM	01:25 PM	1 PM	01:35 PM	01:40 PM	01:45 PM	01:50 PM	01:55 PM	02:00 PM	02:05 PM	02:10 PM	02:15 PM	02:20 PM	02:25 PM	2 PM	02:35 PM	02:40 PM	02:45 PM	02:50 PM	02:55 PM	03:00 PM	03:05 PM	03:10 PM	03:15 PM	03:20 PM

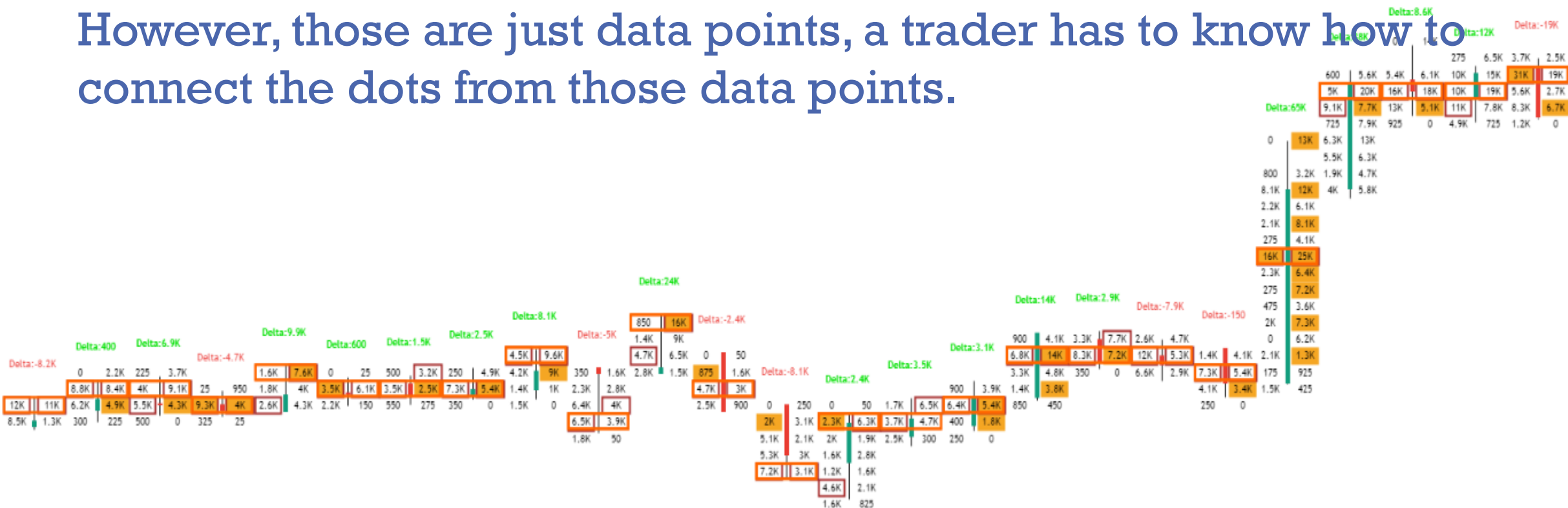
43400.00
43380.00
43360.00
43340.00
43320.00
43300.00
43280.00
43260.00
43240.00
43220.00
43200.00
43180.00
43160.00
43140.00
43120.00
43100.00
43080.00
43060.00
43040.00
43020.00
43000.00
42980.00
42960.00

Volume
Delta ▲
Max ▲
Min ▲
Cum ▲
% ▼



Market Generated Information - Information that only the order flow can give a trader such as delta, POC and imbalances.

However, those are just data points, a trader has to know how to connect the dots from those data points.



32.95K	31K	27.2K	14.53K	21.78K	11.85K	10.5K	18.18K	31.15K	29.58K	42.98K	13.55K	30.98K	28.68K	19.35K	18.95K	40.25K	26.85K	33.83K	25.85K	142.63K	103.95K	79.4K	85.18K	80K
-8.15K	400	6.9K	-4.68K	9.93K	600	1.45K	2.48K	8.05K	-4.98K	23.63K	-2.4K	-8.08K	2.43K	3.5K	3.1K	13.7K	2.9K	-7.93K	-150	65.43K	38K	8.55K	12.48K	-18.95K
4.13K	8.55K	7.6K	1.13K	11.05K	2.5K	2.58K	5.6K	11.58K	75	24.15K	50	250	3.33K	4.73K	6.18K	13.7K	3.73K	2.95K	650	65.55K	39K	19.63K	17.78K	725
-8.83K	-75	-550	-4.68K	-500	-875	375	-2K	-1.95K	-8.18K	-925	-2.65K	-9.33K	-4.33K	-975	-175	-50	-1.7K	-7.93K	-2.83K	-1.38K	800	-2.85K	-9K	-19.5K
-1.15K	-749	6.15K	1.48K	11.4K	12K	13.45K	15.93K	23.98K	19K	42.63K	40.23K	32.15K	34.58K	38.08K	41.18K	54.88K	57.78K	49.85K	49.7K	115.13K	153.13K	161.68K	174.15K	155.2K
24.73%	1.29%	25.37%	32.19%	45.58%	5.06%	13.81%	13.62%	25.84%	16.82%	54.97%	17.71%	26.07%	8.46%	18.09%	16.36%	34.04%	10.8%	23.43%	0.58%	45.87%	36.56%	10.77%	14.65%	23.69%

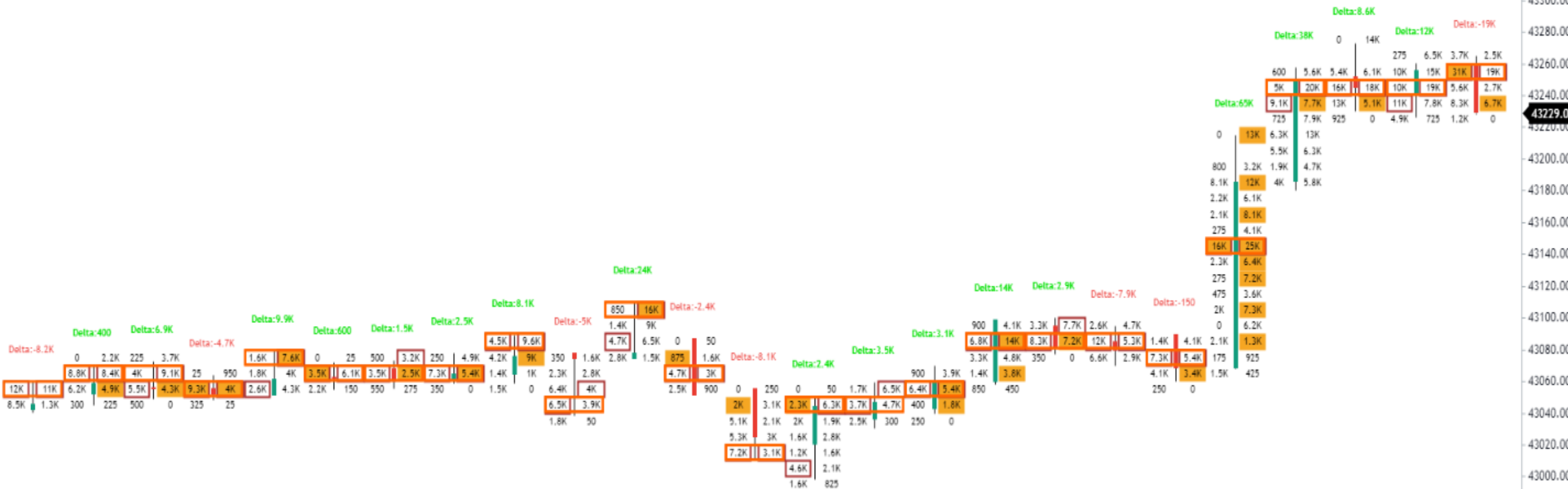
01:20 PM 01:25 PM 1 PM 01:35 PM 01:40 PM 01:45 PM 01:50 PM 01:55 PM 02:00 PM 02:05 PM 02:10 PM 02:15 PM 02:20 PM 02:25 PM 2 PM 02:35 PM 02:40 PM 02:45 PM 02:50 PM 02:55 PM 03:00 PM 03:05 PM 03:10 PM 03:15 PM 03:20 PM

43400.00
43380.00
43360.00
43340.00
43320.00
43300.00
43280.00
43260.00
43240.00
43229.05
43220.00
43200.00
43180.00
43160.00
43140.00
43120.00
43100.00
43080.00
43060.00
43040.00
43020.00
43000.00
42980.00
42960.00

Volume
Delta ▲
Max ▲
Min ▲
Cum ▲
% ▲



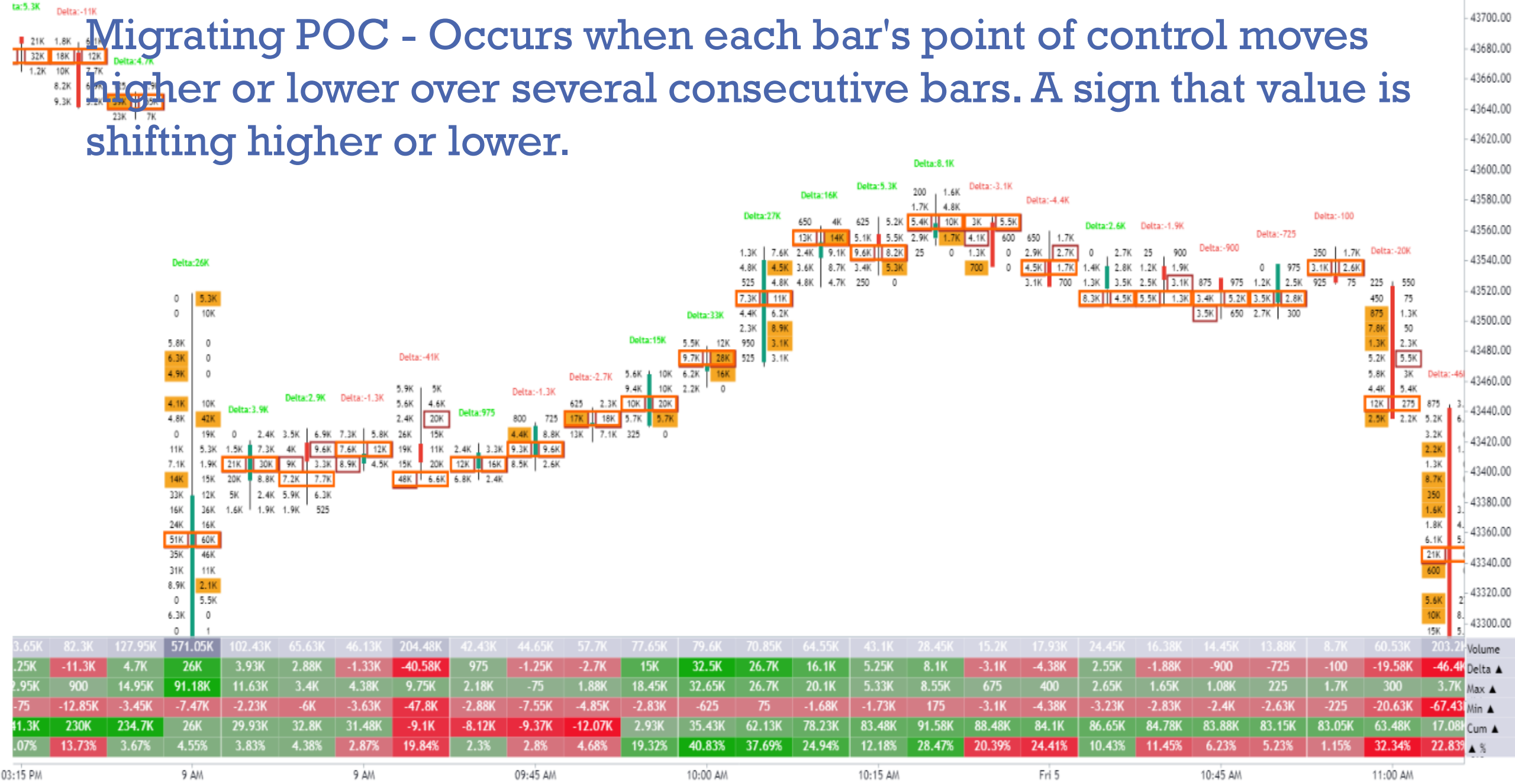
Max Delta - The most positive delta was in a bar. The point aggressive buyers were strongest.



32.95K	31K	27.2K	14.53K	21.78K	11.85K	10.5K	18.18K	31.15K	29.58K	42.98K	13.55K	30.98K	28.68K	19.35K	18.95K	40.25K	26.85K	33.83K	25.85K	142.63K	103.95K	79.4K	85.18K	80K
-8.15K	400	6.9K	-4.68K	9.93K	600	1.45K	2.48K	8.05K	-4.98K	23.63K	-2.4K	-8.08K	2.43K	3.5K	3.1K	13.7K	2.9K	-7.93K	-150	65.43K	38K	8.55K	12.48K	-18.95K
4.13K	8.55K	7.6K	1.13K	11.05K	2.5K	2.58K	5.6K	11.58K	75	24.15K	50	250	3.33K	4.73K	6.18K	13.7K	3.73K	2.95K	650	65.55K	39K	19.63K	17.78K	725
-8.83K	-75	-550	-4.68K	-500	-875	375	-2K	-1.95K	-8.18K	-925	-2.65K	-9.33K	-4.33K	-975	-175	-50	-1.7K	-7.93K	-2.83K	-1.38K	800	-2.85K	-9K	-19.5K
-1.15K	-749	6.15K	1.48K	11.4K	12K	13.45K	15.93K	23.98K	19K	42.63K	40.23K	32.15K	34.58K	38.08K	41.18K	54.88K	57.78K	49.85K	49.7K	115.13K	153.13K	161.68K	174.15K	155.2K
24.73%	1.29%	25.37%	32.19%	45.58%	5.06%	13.81%	13.62%	25.84%	16.82%	54.97%	17.71%	26.07%	8.46%	18.09%	16.36%	34.04%	10.8%	23.43%	0.58%	45.87%	36.56%	10.77%	14.65%	23.69%
01:20 PM	01:25 PM	1 PM	01:35 PM	01:40 PM	01:45 PM	01:50 PM	01:55 PM	02:00 PM	02:05 PM	02:10 PM	02:15 PM	02:20 PM	02:25 PM	2 PM	02:35 PM	02:40 PM	02:45 PM	02:50 PM	02:55 PM	03:00 PM	03:05 PM	03:10 PM	03:15 PM	03:20 PM

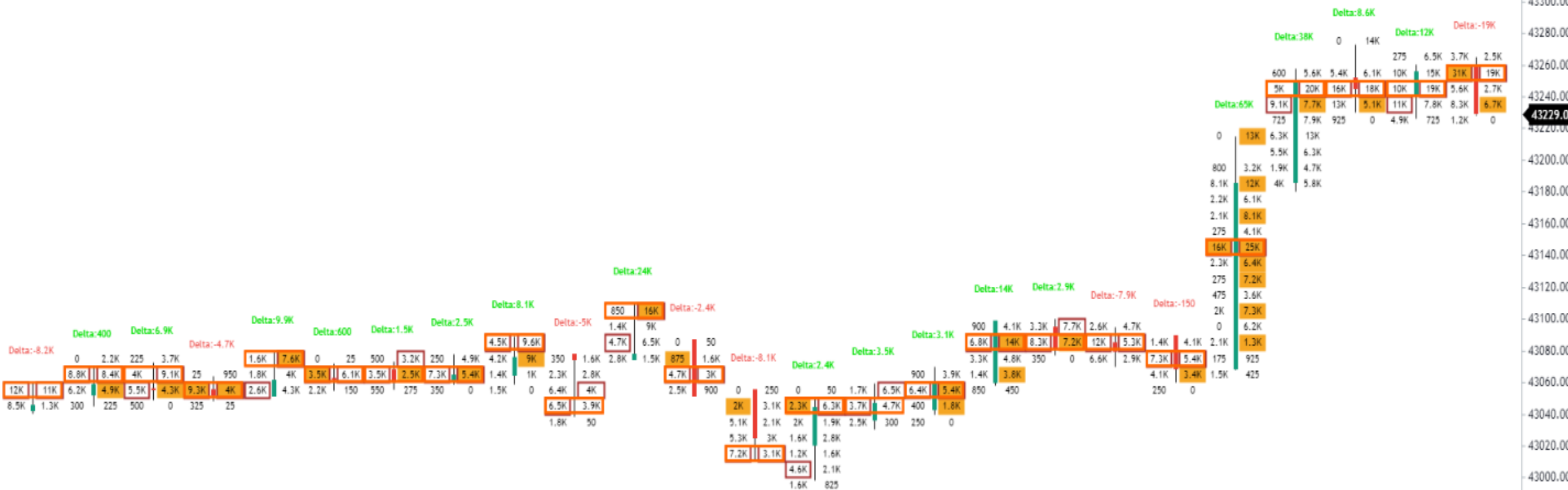
43400.00
43380.00
43360.00
43340.00
43320.00
43300.00
43280.00
43260.00
43240.00
43220.00
43200.00
43180.00
43160.00
43140.00
43120.00
43100.00
43080.00
43060.00
43040.00
43020.00
43000.00
42980.00
42960.00

Migrating POC - Occurs when each bar's point of control moves higher or lower over several consecutive bars. A sign that value is shifting higher or lower.





Min Delta - The most negative delta was in a bar. The point aggressive sellers were strongest.

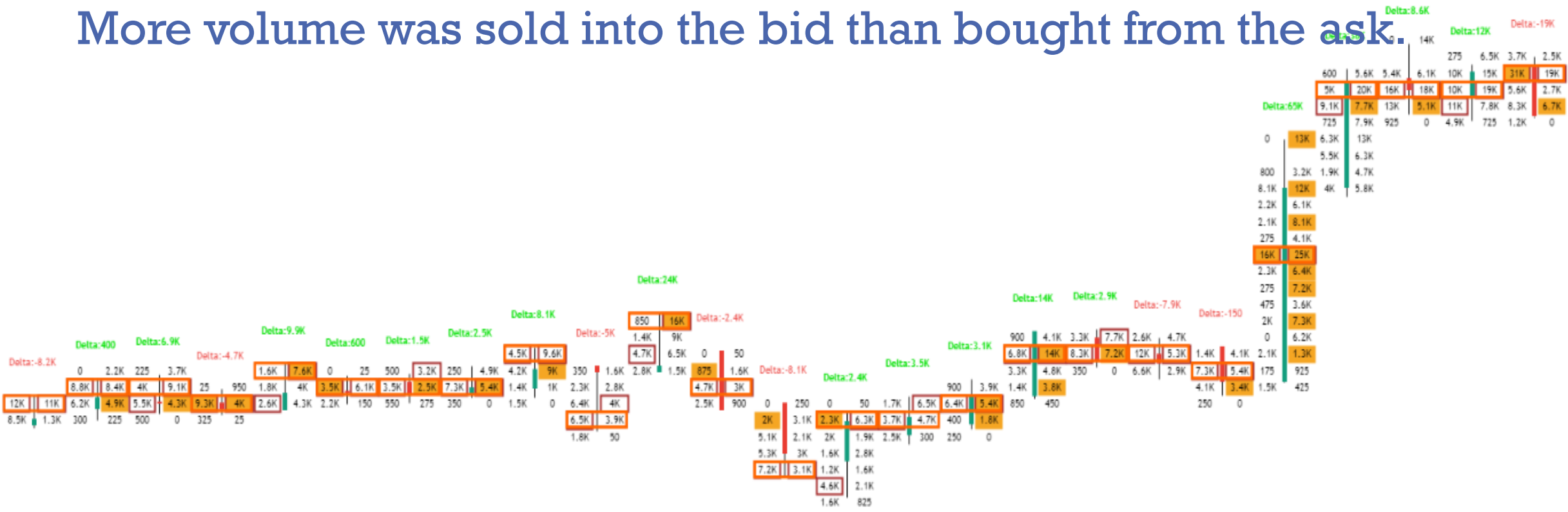


32.95K	31K	27.2K	14.53K	21.78K	11.85K	10.5K	18.18K	31.15K	29.58K	42.98K	13.55K	30.98K	28.68K	19.35K	18.95K	40.25K	26.85K	33.83K	25.85K	142.63K	103.95K	79.4K	85.18K	80K
-8.15K	400	6.9K	-4.68K	9.93K	600	1.45K	2.48K	8.05K	-4.98K	23.63K	-2.4K	-8.08K	2.43K	3.5K	3.1K	13.7K	2.9K	-7.93K	-150	65.43K	38K	8.55K	12.48K	-18.95K
4.13K	8.55K	7.6K	1.13K	11.05K	2.5K	2.58K	5.6K	11.58K	75	24.15K	50	250	3.33K	4.73K	6.18K	13.7K	3.73K	2.95K	650	65.55K	39K	19.63K	17.78K	725
-8.83K	-75	-550	-4.68K	-500	-875	375	-2K	-1.95K	-8.18K	-925	-2.65K	-9.33K	-4.33K	-975	-175	-50	-1.7K	-7.93K	-2.83K	-1.38K	800	-2.85K	-9K	-19.5K
-1.15K	-749	6.15K	1.48K	11.4K	12K	13.45K	15.93K	23.98K	19K	42.63K	40.23K	32.15K	34.58K	38.08K	41.18K	54.88K	57.78K	49.85K	49.7K	115.13K	153.13K	161.68K	174.15K	155.2K
24.73%	1.29%	25.37%	32.19%	45.58%	5.06%	13.81%	13.62%	25.84%	16.82%	54.97%	17.71%	26.07%	8.46%	18.09%	16.36%	34.04%	10.8%	23.43%	0.58%	45.87%	36.56%	10.77%	14.65%	23.69%
01:20 PM	01:25 PM	1 PM	01:35 PM	01:40 PM	01:45 PM	01:50 PM	01:55 PM	02:00 PM	02:05 PM	02:10 PM	02:15 PM	02:20 PM	02:25 PM	2 PM	02:35 PM	02:40 PM	02:45 PM	02:50 PM	02:55 PM	03:00 PM	03:05 PM	03:10 PM	03:15 PM	03:20 PM

43400.00
43380.00
43360.00
43340.00
43320.00
43300.00
43280.00
43260.00
43240.00
43220.00
43200.00
43180.00
43160.00
43140.00
43120.00
43100.00
43080.00
43060.00
43040.00
43020.00
43000.00
42980.00
42960.00

Volume
Delta ▲
Max ▲
Min ▲
Cum ▲
% ▼

Negative Delta - When there is negative delta, it indicates there are more aggressive sellers than aggressive buyers in the bar. More volume was sold into the bid than bought from the ask.



32.95K	31K	27.2K	14.53K	21.78K	11.85K	10.5K	18.18K	31.15K	29.58K	42.98K	13.55K	30.98K	28.68K	19.35K	18.95K	40.25K	26.85K	33.83K	25.85K	142.63K	103.95K	79.4K	85.18K	80K
-8.15K	400	6.9K	-4.68K	9.93K	600	1.45K	2.48K	8.05K	-4.98K	23.63K	-2.4K	-8.08K	2.43K	3.5K	3.1K	13.7K	2.9K	-7.93K	-150	65.43K	38K	8.55K	12.48K	-18.95K
4.13K	8.55K	7.6K	1.13K	11.05K	2.5K	2.58K	5.6K	11.58K	75	24.15K	50	250	3.33K	4.73K	6.18K	13.7K	3.73K	2.95K	650	65.55K	39K	19.63K	17.78K	725
-8.83K	-75	-550	-4.68K	-500	-875	375	-2K	-1.95K	-8.18K	-925	-2.65K	-9.33K	-4.33K	-975	-175	-50	-1.7K	-7.93K	-2.83K	-1.38K	800	-2.85K	-9K	-19.5K
-1.15K	-749	6.15K	1.48K	11.4K	12K	13.45K	15.93K	23.98K	19K	42.63K	40.23K	32.15K	34.58K	38.08K	41.18K	54.88K	57.78K	49.85K	49.7K	115.13K	153.13K	161.68K	174.15K	155.2K
24.73%	1.29%	25.37%	32.19%	45.58%	5.06%	13.81%	13.62%	25.84%	16.82%	54.97%	17.71%	26.07%	8.46%	18.09%	16.36%	34.04%	10.8%	23.43%	0.58%	45.87%	36.56%	10.77%	14.65%	23.69%
01:20 PM	01:25 PM	1 PM	01:35 PM	01:40 PM	01:45 PM	01:50 PM	01:55 PM	02:00 PM	02:05 PM	02:10 PM	02:15 PM	02:20 PM	02:25 PM	2 PM	02:35 PM	02:40 PM	02:45 PM	02:50 PM	02:55 PM	03:00 PM	03:05 PM	03:10 PM	03:15 PM	03:20 PM

43400.00
43380.00
43360.00
43340.00
43320.00
43300.00
43280.00
43260.00
43240.00
43220.00
43200.00
43180.00
43160.00
43140.00
43120.00
43100.00
43080.00
43060.00
43040.00
43020.00
43000.00
42980.00
42960.00

Offer - Another term for the Ask. The price sellers are willing to sell at in the two-way auction. Also see Ask.

Trades		DOM		Orders	
1.08		Grouping: 0.0001		1.08	
Bid	Buy	Price	Sell	Ask	
		1.0866			
		1.0865			
		1.0864			
		1.0863			
		1.0862			
		1.0861			
		1.086			
		1.0859			
		1.0858			
		1.0857			
		1.0856			
		1.0855			
		1.0854			
		1.0853			
		1.0852			
		1.0851			
		1.085			
		1.0849			
		1.0848			
		1.0847			
		1.0846			
		1.0845			
		1.0844			
		1.0843			
		1.0842	149		
	125	1.0841	110		
	239	1.084	703	53	
56	1.61K	1.0839			
		1.0838			
		1.0837			
		1.0836			
		1.0835			
		1.0834			
		1.0833			
		1.0832			
		1.0831			
		1.083			

Passive Buyers - Buyers who are working a bid in the two-way auction. They can be on the current bid or working bids below the current bid.

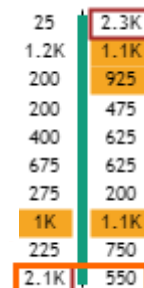
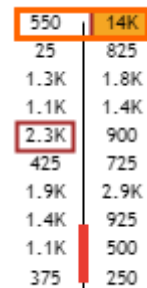
Trades		DOM		Orders	
1.08		Grouping: 0.0001			1.08
Bid	Buy	Price	Sell	Ask	
56		1.0866			53
		1.0865			
		1.0864			
		1.0863			
		1.0862			
		1.0861			
		1.086			
		1.0859			
		1.0858			
		1.0857			
		1.0856			
		1.0855			
		1.0854			
		1.0853			
		1.0852			
		1.0851			
		1.085			
		1.0849			
		1.0848			
		1.0847			
	1.0846				
	1.0845				
	1.0844				
	1.0843				
	1.0842	149			
	125	1.0841	110		
	239	1.084	703		
	1.61K	1.0839			
		1.0838			
		1.0837			
		1.0836			
		1.0835			
		1.0834			
		1.0833			
		1.0832			
		1.0831			
		1.083			

Passive Sellers - Sellers who are working an offer in the two-way auction. They can be on the current offer or working offers above the current offer.

The image shows a screenshot of an Order Book (DOM) interface. At the top, there are tabs for 'Trades', 'DOM', and 'Orders', with 'DOM' selected. Below the tabs, the current price is shown as 1.08. The interface is divided into two main sections: 'Bid' (Buy) on the left and 'Ask' (Sell) on the right. The 'Bid' section shows a large blue bar representing a bid of 56 units at a price of 1.08. The 'Ask' section shows a large red bar representing an ask of 53 units at a price of 1.08. The central part of the interface lists various price levels from 1.0866 down to 1.083. The current price of 1.08 is highlighted in red. The 'Buy' column shows quantities for various price levels, including 125, 239, and 1.61K. The 'Sell' column shows quantities for various price levels, including 149, 110, and 703.

Bid	Buy	Price	Sell	Ask
		1.0866		
		1.0865		
		1.0864		
		1.0863		
		1.0862		
		1.0861		
		1.086		
		1.0859		
		1.0858		
		1.0857		
		1.0856		
		1.0855		
		1.0854		
		1.0853		
		1.0852		
		1.0851		
		1.085		
		1.0849		
		1.0848		
		1.0847		
		1.0846		
		1.0845		
		1.0844		
		1.0843		
		1.0842	149	
	125	1.0841	110	
	239	1.084	703	
56	1.61K	1.0839		
		1.0838		
		1.0837		
		1.0836		
		1.0835		
		1.0834		
		1.0833		
		1.0832		
		1.0831		
		1.083		

POC Extreme - When the Point of Control appears on the top price level of a red down candle or the bottom price level of a green up candle.





Point of Control - The price level in a bar where the most volume traded. Sometimes referred to as the COT, Commitment of Traders. In Volume Profile and Market Profile the Point of Control is the price level where the most volume traded during the trading session. In order flow, it is the price level in the individual bar where the most volume traded on the bid and offer.



32.95K	31K	27.2K	14.53K	21.78K	11.85K	10.5K	18.18K	31.15K	29.58K	42.98K	13.55K	30.98K	28.68K	19.35K	18.95K	40.25K	26.85K	33.83K	25.85K	142.63K	103.95K	79.4K	85.18K	80K
-8.15K	400	6.9K	-4.68K	9.93K	600	1.45K	2.48K	8.05K	-4.98K	23.63K	-2.4K	-8.08K	2.43K	3.5K	3.1K	13.7K	2.9K	-7.93K	-150	65.43K	38K	8.55K	12.48K	-18.95K
4.13K	8.55K	7.6K	1.13K	11.05K	2.5K	2.58K	5.6K	11.58K	75	24.15K	50	250	3.33K	4.73K	6.18K	13.7K	3.73K	2.95K	650	65.55K	39K	19.63K	17.78K	725
-8.83K	-75	-550	-4.68K	-500	-875	375	-2K	-1.95K	-8.18K	-925	-2.65K	-9.33K	-4.33K	-975	-175	-50	-1.7K	-7.93K	-2.83K	-1.38K	800	-2.85K	-9K	-19.5K
-1.15K	-749	6.15K	1.48K	11.4K	12K	13.45K	15.93K	23.98K	19K	42.63K	40.23K	32.15K	34.58K	38.08K	41.18K	54.88K	57.78K	49.85K	49.7K	115.13K	153.13K	161.68K	174.15K	155.2K
24.73%	1.29%	25.37%	32.19%	45.58%	5.06%	13.81%	13.62%	25.84%	16.82%	54.97%	17.71%	26.07%	8.46%	18.09%	16.36%	34.04%	10.8%	23.43%	0.58%	45.87%	36.56%	10.77%	14.65%	23.69%

01:20 PM 01:25 PM 1 PM 01:35 PM 01:40 PM 01:45 PM 01:50 PM 01:55 PM 02:00 PM 02:05 PM 02:10 PM 02:15 PM 02:20 PM 02:25 PM 2 PM 02:35 PM 02:40 PM 02:45 PM 02:50 PM 02:55 PM 03:00 PM 03:05 PM 03:10 PM 03:15 PM 03:20 PM

43400.00
43380.00
43360.00
43340.00
43320.00
43300.00
43280.00
43260.00
43240.00
43220.00
43200.00
43180.00
43160.00
43140.00
43120.00
43100.00
43080.00
43060.00
43040.00
43020.00
43000.00
42980.00
42960.00

Volume
Delta ▲
Max ▲
Min ▲
Cum ▲
% ▲



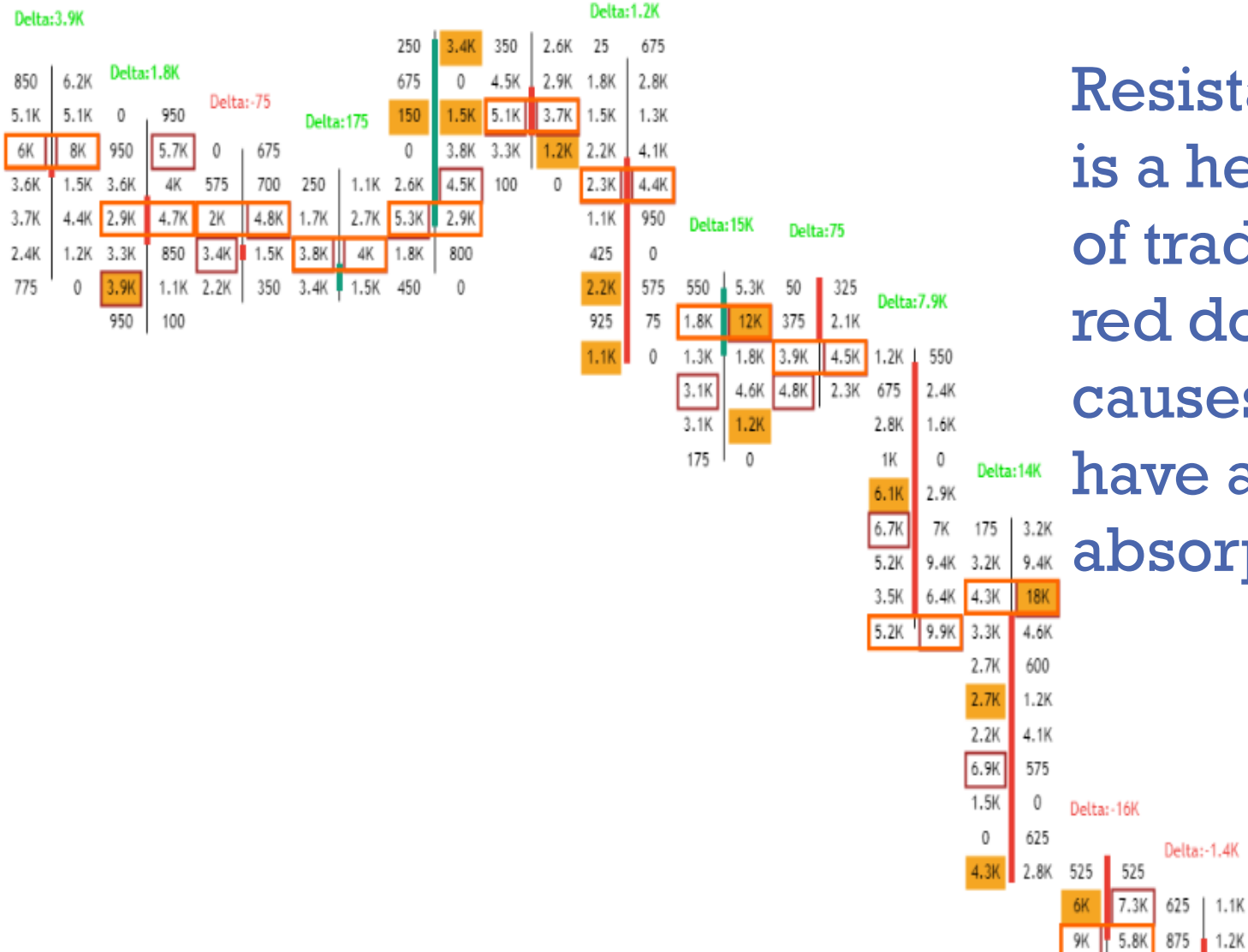
Positive Delta - When there is positive delta, it indicates there are more aggressive buyers than aggressive sellers in the bar. More volume was bought from the offer than sold into the bid.



32.95K	31K	27.2K	14.53K	21.78K	11.85K	10.5K	18.18K	31.15K	29.58K	42.98K	13.55K	30.98K	28.68K	19.35K	18.95K	40.25K	26.85K	33.83K	25.85K	142.63K	103.95K	79.4K	85.18K	80K
-8.15K	400	6.9K	-4.68K	9.93K	600	1.45K	2.48K	8.05K	-4.98K	23.63K	-2.4K	-8.08K	2.43K	3.5K	3.1K	13.7K	2.9K	-7.93K	-150	65.43K	38K	8.55K	12.48K	-18.95K
4.13K	8.55K	7.6K	1.13K	11.05K	2.5K	2.58K	5.6K	11.58K	75	24.15K	50	250	3.33K	4.73K	6.18K	13.7K	3.73K	2.95K	650	65.55K	39K	19.63K	17.78K	725
-8.83K	-75	-550	-4.68K	-500	-875	375	-2K	-1.95K	-8.18K	-925	-2.65K	-9.33K	-4.33K	-975	-175	-50	-1.7K	-7.93K	-2.83K	-1.38K	800	-2.85K	-9K	-19.5K
-1.15K	-749	6.15K	1.48K	11.4K	12K	13.45K	15.93K	23.98K	19K	42.63K	40.23K	32.15K	34.58K	38.08K	41.18K	54.88K	57.78K	49.85K	49.7K	115.13K	153.13K	161.68K	174.15K	155.2K
24.73%	1.29%	25.37%	32.19%	45.58%	5.06%	13.81%	13.62%	25.84%	16.82%	54.97%	17.71%	26.07%	8.46%	18.09%	16.36%	34.04%	10.8%	23.43%	0.58%	45.87%	36.56%	10.77%	14.65%	23.69%
01:20 PM	01:25 PM	1 PM	01:35 PM	01:40 PM	01:45 PM	01:50 PM	01:55 PM	02:00 PM	02:05 PM	02:10 PM	02:15 PM	02:20 PM	02:25 PM	2 PM	02:35 PM	02:40 PM	02:45 PM	02:50 PM	02:55 PM	03:00 PM	03:05 PM	03:10 PM	03:15 PM	03:20 PM

43400.00
43380.00
43360.00
43340.00
43320.00
43300.00
43280.00
43260.00
43240.00
43220.00
43200.00
43180.00
43160.00
43140.00
43120.00
43100.00
43080.00
43060.00
43040.00
43020.00
43000.00
42980.00
42960.00

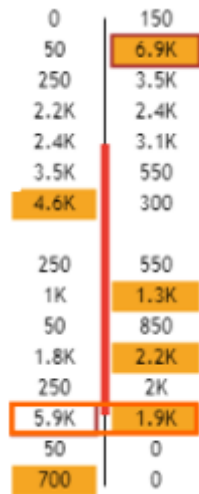
Volume
Delta ▲
Max ▲
Min ▲
Cum ▲
% ▼



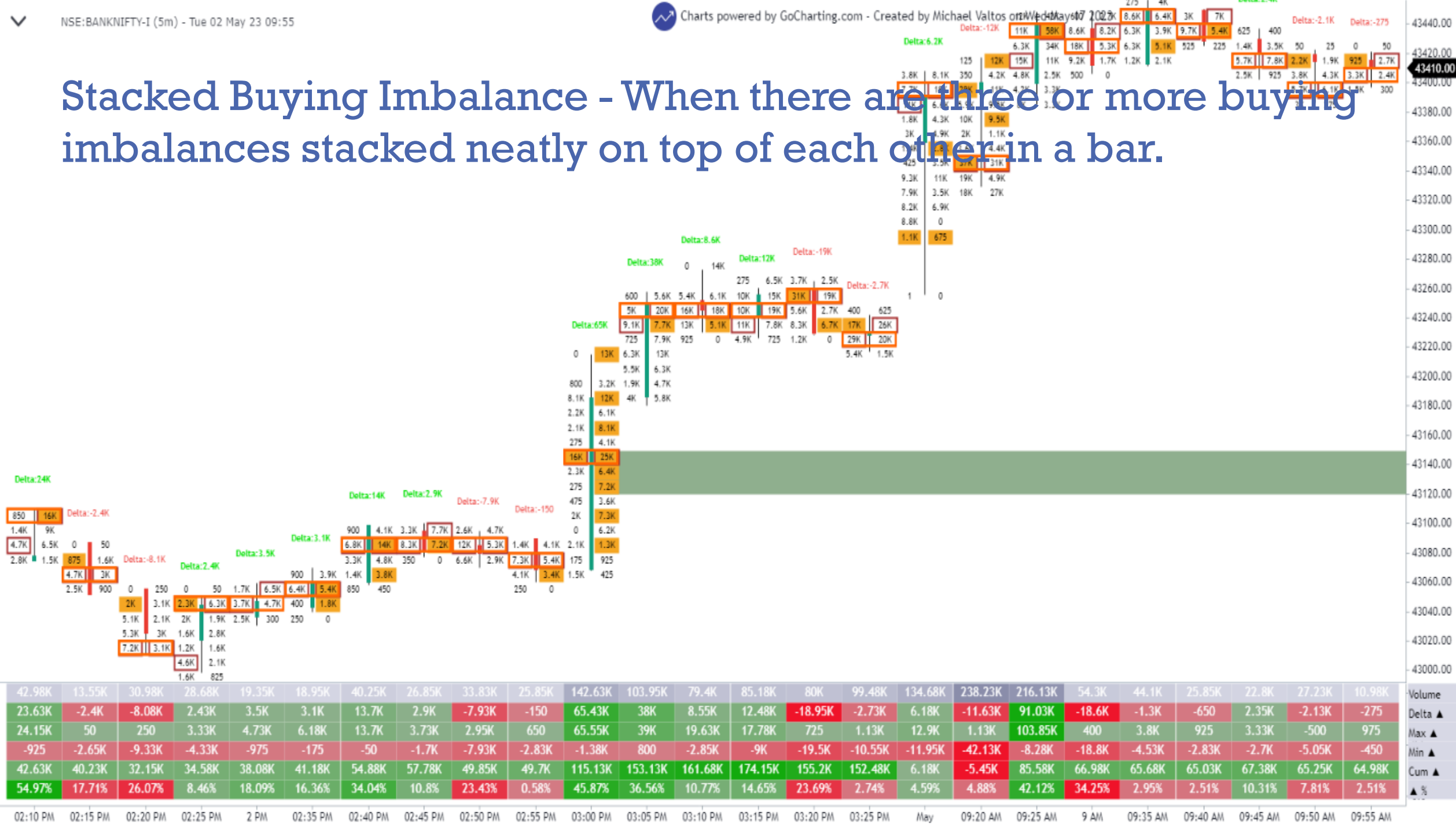
Resistance Selling - When there is a heavier than normal volume of trades on the offer side of a red down candle which usually causes the red down candle to have a positive delta. A type of absorption.

Time	Volume	Delta	Max	Min	Cum
02:15 PM	48.55K	3.9K	7K	-100	81.2K
02:20 PM	32.95K	1.75K	4.55K	-1.93K	82.95K
02:25 PM	16.18K	-75	775	-600	82.88K
2 PM	18.43K	175	1.7K	-150	83.05K
02:35 PM	28.15K	5.6K	5.8K	-1.23K	88.65K
02:40 PM	23.68K	-2.93K	600	-3.93K	85.73K
02:45 PM	28.33K	1.23K	4.93K	-350	86.95K
02:50 PM	34.95K	15.05K	15.08K	-1.58K	102K
02:55 PM	18.23K	75	2.1K	-1.35K	102.08K
03:00 PM	72.48K	7.88K	9.85K	-9.28K	109.95K
03:05 PM	76.13K	13.78K	22.4K	-2.4K	123.73K
03:10 PM	88.53K	-15.58K	475	-17.93K	108.15K
03:15 PM	46.88K	-1.38K	25	-4.78K	106.78K
03:20 PM	41.93K	225	3.13K	-2.13K	107K
03:25 PM	87.08K	10.43K	11.8K	-9.35K	117.43K
9 AM	121.18K	-7.92K	7.68K	-8.57K	-7.92K
09:20 AM	73K	-50	8.05K	-3.68K	-7.97K
09:25 AM	118.95K	-44.4K	550	-44.63K	-52.37K
9 AM	64.6K	-6.7K	2.28K	-6.7K	-59.07K
09:35 AM	49.18K	-5.28K	500	-5.28K	-64.35K
09:40 AM	49.85K	-15K	-225	-19.1K	-79.35K
09:45 AM	80.7K	-31.1K	7.0K	-33.0K	-111.1K

Selling Imbalance - When aggressive sellers outnumber aggressive buyers in the two-way auction by a predetermined ratio, usually 4-1 (400%).

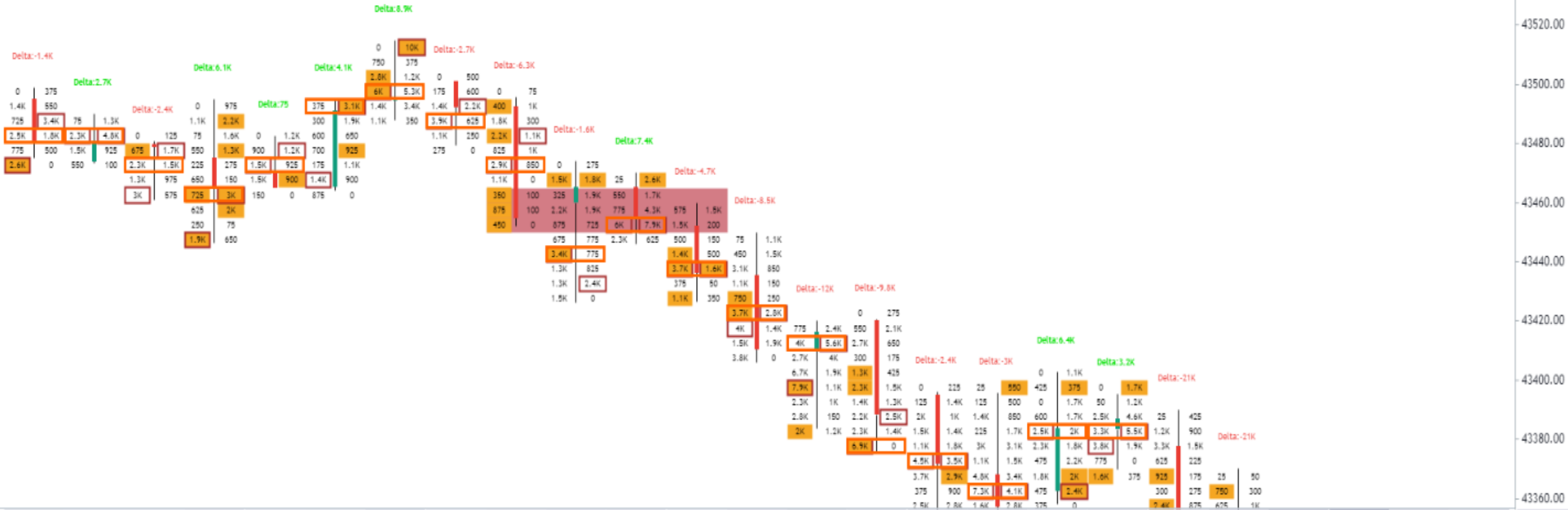


Stacked Buying Imbalance - When there are three or more buying imbalances stacked neatly on top of each other in a bar.

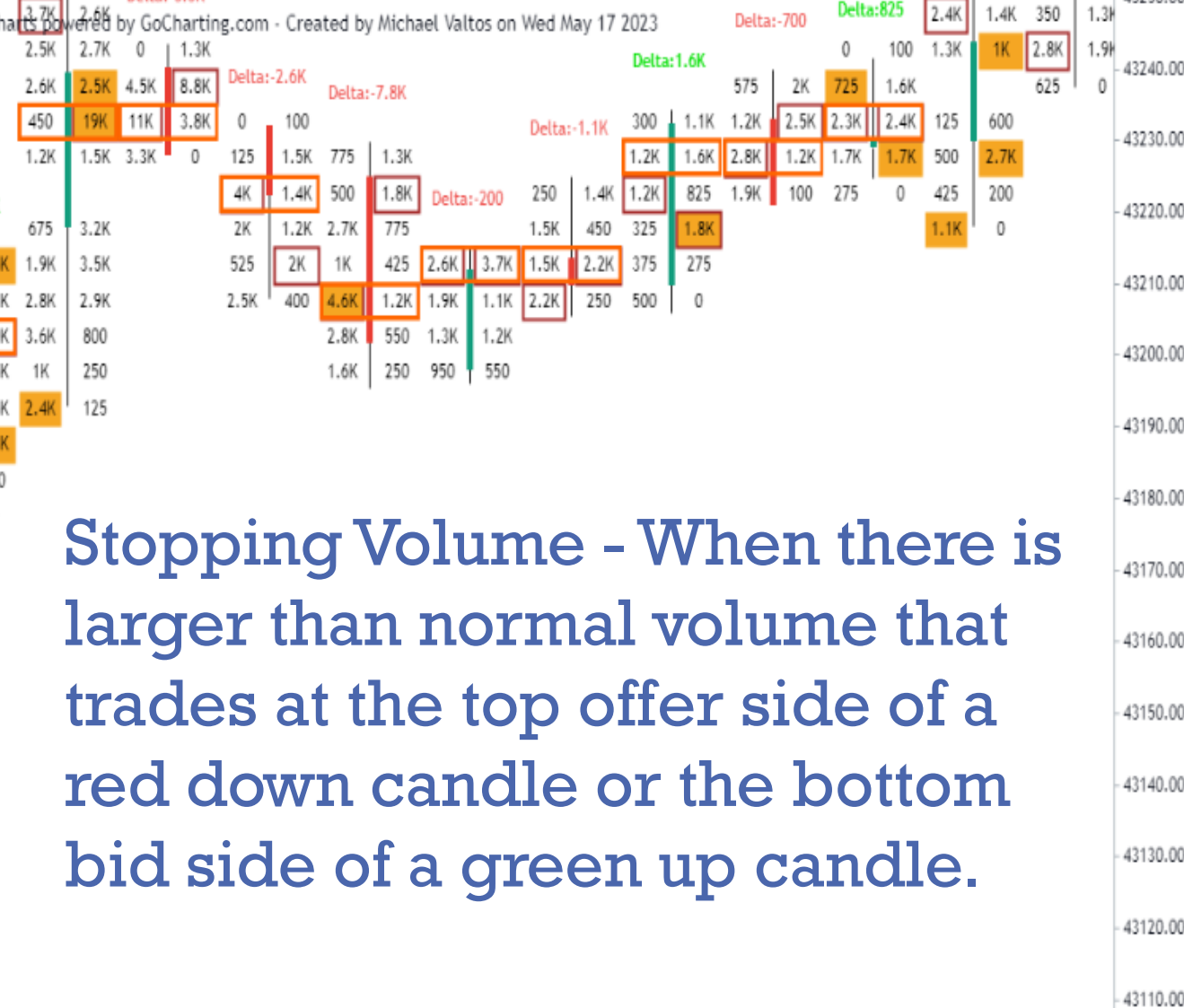
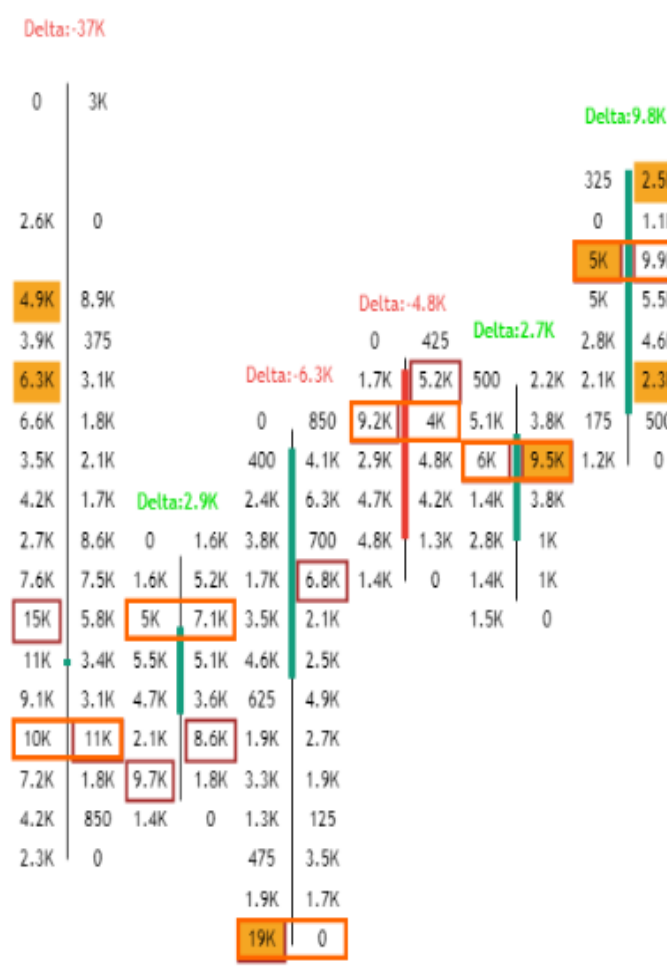


42.98K	13.55K	30.98K	28.68K	19.35K	18.95K	40.25K	26.85K	33.83K	25.85K	142.63K	103.95K	79.4K	85.18K	80K	99.48K	134.68K	238.23K	216.13K	54.3K	44.1K	25.85K	22.8K	27.23K	10.98K	Volume
23.63K	-2.4K	-8.08K	2.43K	3.5K	3.1K	13.7K	2.9K	-7.93K	-150	65.43K	38K	8.55K	12.48K	-18.95K	-2.73K	6.18K	-11.63K	91.03K	-18.6K	-1.3K	-650	2.35K	-2.13K	-275	Delta ▲
24.15K	50	250	3.33K	4.73K	6.18K	13.7K	3.73K	2.95K	650	65.55K	39K	19.63K	17.78K	725	1.13K	12.9K	1.13K	103.85K	400	3.8K	925	3.33K	-500	975	Max ▲
-925	-2.65K	-9.33K	-4.33K	-975	-175	-50	-1.7K	-7.93K	-2.83K	-1.38K	800	-2.85K	-9K	-19.5K	-10.55K	-11.95K	-42.13K	-8.28K	-18.8K	-4.53K	-2.83K	-2.7K	-5.05K	-450	Min ▲
42.63K	40.23K	32.15K	34.58K	38.08K	41.18K	54.88K	57.78K	49.85K	49.7K	115.13K	153.13K	161.68K	174.15K	155.2K	152.48K	6.18K	-5.45K	85.58K	66.98K	65.68K	65.03K	67.38K	65.25K	64.98K	Cum ▲
54.97%	17.71%	26.07%	8.46%	18.09%	16.36%	34.04%	10.8%	23.43%	0.58%	45.87%	36.56%	10.77%	14.65%	23.69%	2.74%	4.59%	4.88%	42.12%	34.25%	2.95%	2.51%	10.31%	7.81%	2.51%	▲ %

Stacked Selling Imbalance - When there are three or more selling imbalances stacked neatly on top of each other in a bar.



14.63K	11.5K	12K	18.2K	8.23K	12.88K	32.85K	10.98K	15.4K	24.33K	26.63K	13.43K	28.3K	46.45K	30.2K	36.68K	39.88K	24.1K	27.15K	36.2K	59.35K	105.48K	157.63K	53.98K	46.33K	Volume
-1.43K	2.7K	-2.4K	6.05K	75	4.13K	8.9K	-2.68K	-6.3K	-1.58K	7.38K	-4.68K	-8.45K	-11.85K	-9.8K	-2.43K	-2.98K	6.35K	3.15K	-21.4K	-21.05K	-31.28K	-46.08K	-7.48K	3.53K	Delta ▲
225	2.7K	100	6.1K	750	4.18K	15.9K	450	725	400	7.73K	225	525	925	375	375	150	6.4K	4.83K	550	5.23K	10.78K	-550	-50	8.18K	Max ▲
-3.9K	-225	-3.05K	-25	-225	-1.23K	-375	-3.18K	-6.33K	-5.53K	-25	-4.68K	-9.23K	-13.58K	-11.38K	-5.53K	-4.65K	-300	-25	-23.03K	-21.05K	-34K	-50.8K	-9.45K	-4.93K	Min ▲
81.1K	83.8K	81.4K	87.45K	87.53K	91.65K	100.55K	97.88K	91.58K	90K	97.38K	92.7K	84.25K	72.4K	62.6K	60.18K	57.2K	63.55K	66.7K	45.3K	24.25K	-7.02K	-53.1K	-60.57K	-57.05K	Cum ▲
9.74%	23.48%	20%	33.24%	0.91%	32.04%	27.09%	24.37%	40.91%	6.47%	27.7%	34.82%	29.86%	25.51%	32.45%	6.61%	7.46%	26.35%	11.6%	59.12%	35.47%	29.65%	29.23%	13.85%	7.61%	▲ %



Stopping Volume - When there is larger than normal volume that trades at the top offer side of a red down candle or the bottom bid side of a green up candle.

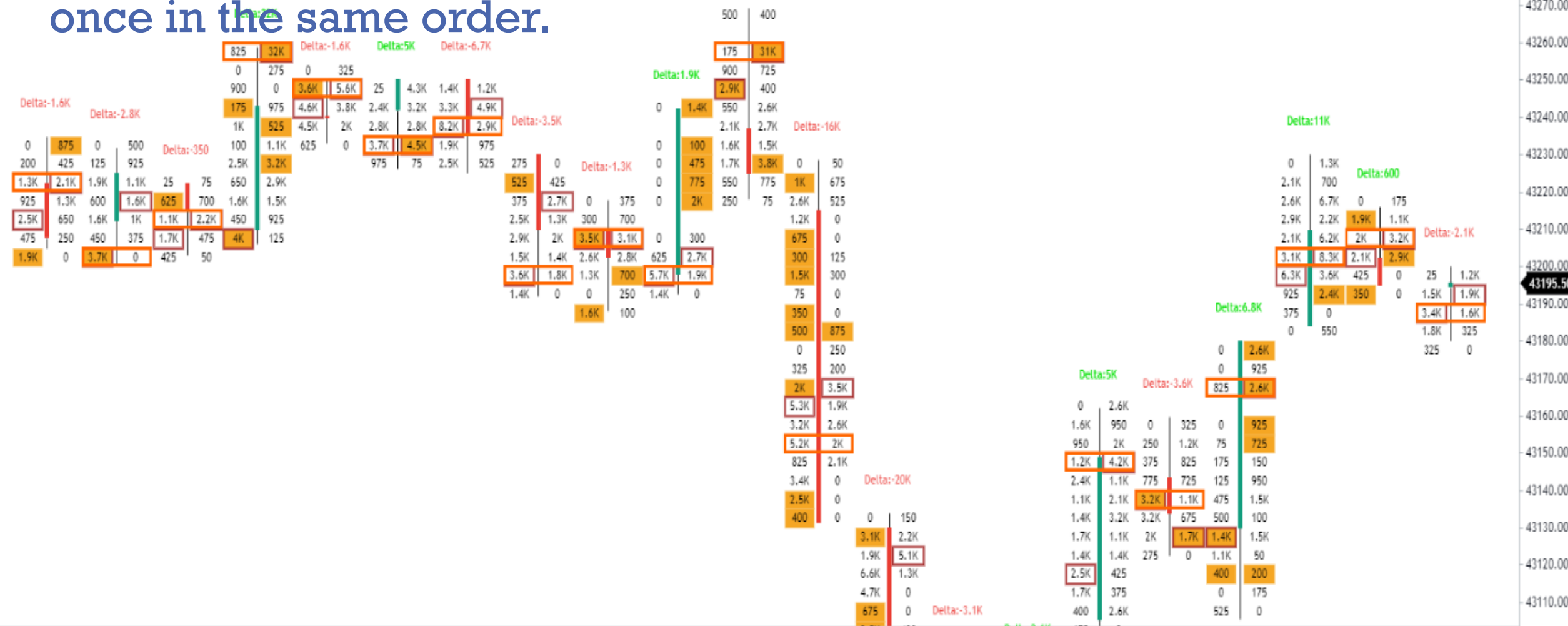
34.15K	50.1K	78.85K	40.83K	61.4K	164.15K	62.93K	82.33K	44.38K	40.08K	42.7K	73.93K	33.2K	15.68K	20.25K	13.3K	9.75K	9.33K	12.2K	10.73K	25.93K	38.9K	Volume
-8.5K	-16.15K	-22.75K	10.73K	-8.55K	-37.5K	2.88K	-6.33K	-4.78K	2.68K	9.75K	28.33K	-5.25K	-2.58K	-7.8K	-200	-1.1K	1.63K	-700	825	10.28K	22.65K	Delta ▲
50	425	-475	11.58K	2.75K	4.23K	3.03K	775	1.45K	7.45K	9.75K	30.55K	150	100	875	1.13K	1.53K	1.95K	1.13K	1.38K	12.2K	22.65K	Max ▲
-9.38K	-16.45K	-25.18K	-550	-9.7K	-37.82K	-4.58K	-21.38K	-5.7K	-225	-875	-5.98K	-7.63K	-3.85K	-8.13K	-1.98K	-1.1K	-375	-800	-450	-975	-1.03K	Min ▲
60.23K	44.08K	21.33K	32.05K	23.5K	-37.5K	-34.62K	-40.95K	-45.72K	-43.05K	-33.3K	-4.97K	-10.22K	-12.8K	-20.6K	-20.8K	-21.9K	-20.27K	-20.97K	-20.15K	-9.87K	12.78K	Cum ▲
03:05 PM	03:10 PM	03:15 PM	03:20 PM	03:25 PM	9 AM	09:20 AM	09:25 AM	9 AM	09:35 AM	09:40 AM	09:45 AM	09:50 AM	09:55 AM	10:00 AM	10:05 AM	10:10 AM	10:15 AM	10:20 AM	10:25 AM	Wed 3	10:35 AM	0.0

Supportive Buying - When there is heavier than normal volume that traded on the bid side of a green up candle which usually causes the green up candle to have negative delta. A sign of absorption.



42.45K	11.18K	15.6K	7.5K	43.85K	25.53K	18.2K	28.03K	42.2K	28.65K	18.95K	16.85K	14.7K	10.7K	11.9K	24.03K	33.75K	49.45K	58.08K	61.4K	143.43K	148.3K	52.95K	91.5K	70.78K	Volume
11.15K	-725	5.05K	3.1K	25.95K	7.43K	-4.95K	11.48K	-6.95K	4.85K	-8.6K	-300	1.65K	2.45K	1.15K	6.53K	7.15K	-12.9K	22.83K	17.05K	52.28K	-18.8K	17.35K	31.1K	12.68K	Delta ▲
13.7K	450	6.03K	3.1K	25.95K	8.43K	400	11.53K	2.73K	9.33K	550	1.35K	2.48K	2.6K	1.2K	7.4K	7.35K	1.75K	23.93K	17.88K	56.15K	15.4K	17.53K	34.33K	12.68K	Max ▲
1.08K	-1.18K	-25	25	-100	-525	-5.55K	125	-9.5K	-1.48K	-9.05K	-1.15K	-175	-25	-1.55K	-4.15K	-550	-15.18K	-550	1.2K	-3.18K	-27.38K	-1.85K	725	-6.53K	Min ▲
63.35K	62.63K	67.68K	70.78K	96.73K	104.15K	99.2K	110.68K	103.73K	108.58K	99.98K	99.68K	101.33K	103.78K	104.93K	111.45K	118.6K	105.7K	128.53K	145.58K	197.85K	179.05K	196.4K	227.5K	240.18K	Cum ▲
26.27%	6.49%	32.37%	41.33%	59.18%	29.09%	27.2%	40.95%	16.47%	16.93%	45.38%	1.78%	11.22%	22.9%	9.66%	27.16%	21.19%	26.09%	39.3%	27.77%	36.45%	12.68%	32.77%	33.99%	17.91%	▲ %
01:05 PM	01:10 PM	01:15 PM	01:20 PM	01:25 PM	1 PM	01:35 PM	01:40 PM	01:45 PM	01:50 PM	01:55 PM	02:00 PM	02:05 PM	02:10 PM	02:15 PM	02:20 PM	02:25 PM	2 PM	02:35 PM	02:40 PM	02:45 PM	02:50 PM	02:55 PM	03:00 PM	03:05 PM	

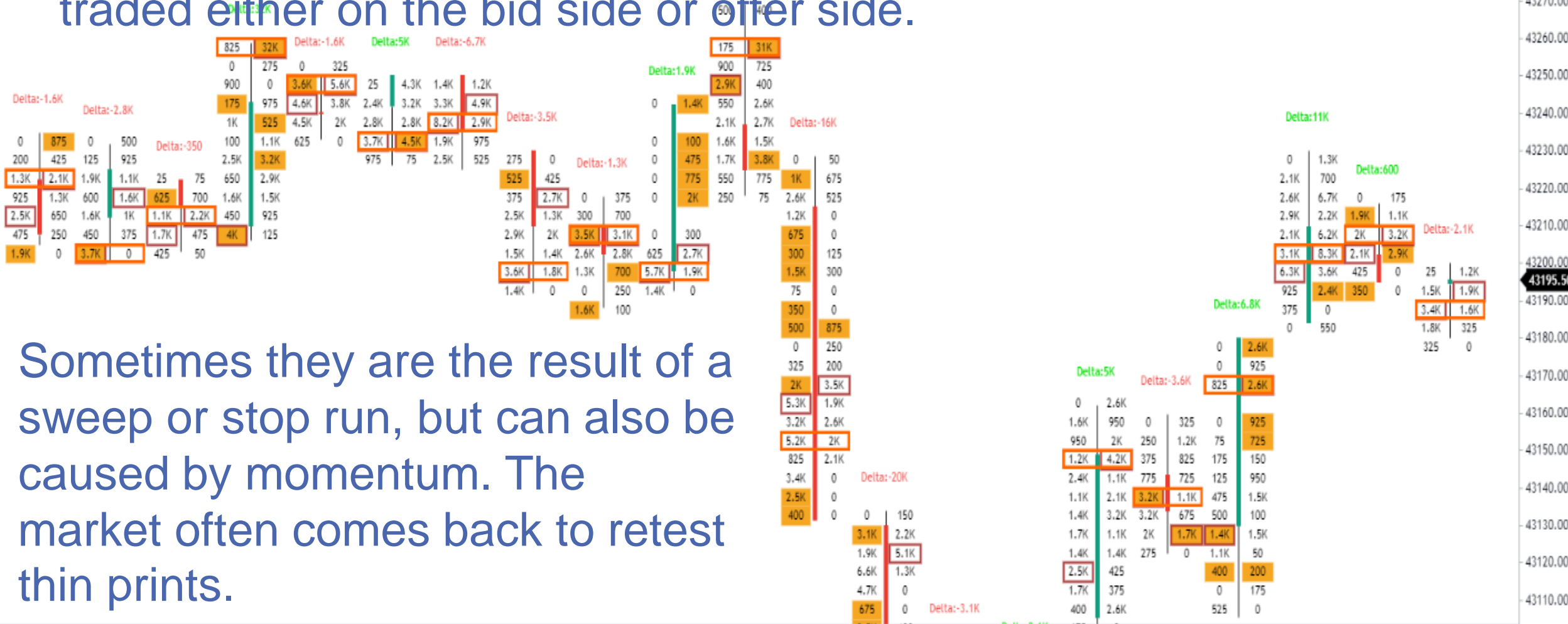
Sweep - When aggressive traders trade through several levels at once in the same order.



12.78K	13.8K	7.35K	55.98K	24.98K	24.7K	27.78K	22.55K	17.28K	17.18K	54.7K	46.33K	83.6K	37.08K	19.73K	39.83K	16.63K	17.93K	52.18K	14.25K	11.93K
-1.58K	-2.8K	-350	31.73K	-1.63K	5K	-6.68K	-3.45K	-1.28K	1.93K	32.35K	-16.18K	-19.95K	-3.08K	2.08K	4.98K	-3.58K	6.83K	11.38K	600	-2.08K
1.43K	425	-25	31.73K	2.23K	5K	900	-275	1.15K	1.93K	32.43K	-975	-550	5.1K	2.08K	6.68K	1.8K	6.83K	11.58K	1.38K	25
-1.58K	-3.75K	-1.75K	-2.35K	-1.98K	-25	-7.85K	-5.63K	-2.05K	-3.88K	-1.4K	-16.18K	-23.9K	-3.68K	-2.43K	950	-3.83K	-1.93K	550	-2.08K	-2.15K
-54.05K	-56.85K	-57.2K	-25.47K	-27.1K	-22.1K	-28.77K	-32.22K	-33.5K	-31.57K	776	-15.4K	-35.35K	-38.42K	-36.35K	-31.37K	-34.95K	-28.12K	-16.75K	-16.15K	-18.22K

Volume
Delta ▲
Max ▲
Min ▲
Cum ▲
-0.0

Thin Prints - Price levels in a bar where very little or no volume is traded either on the bid side or offer side.

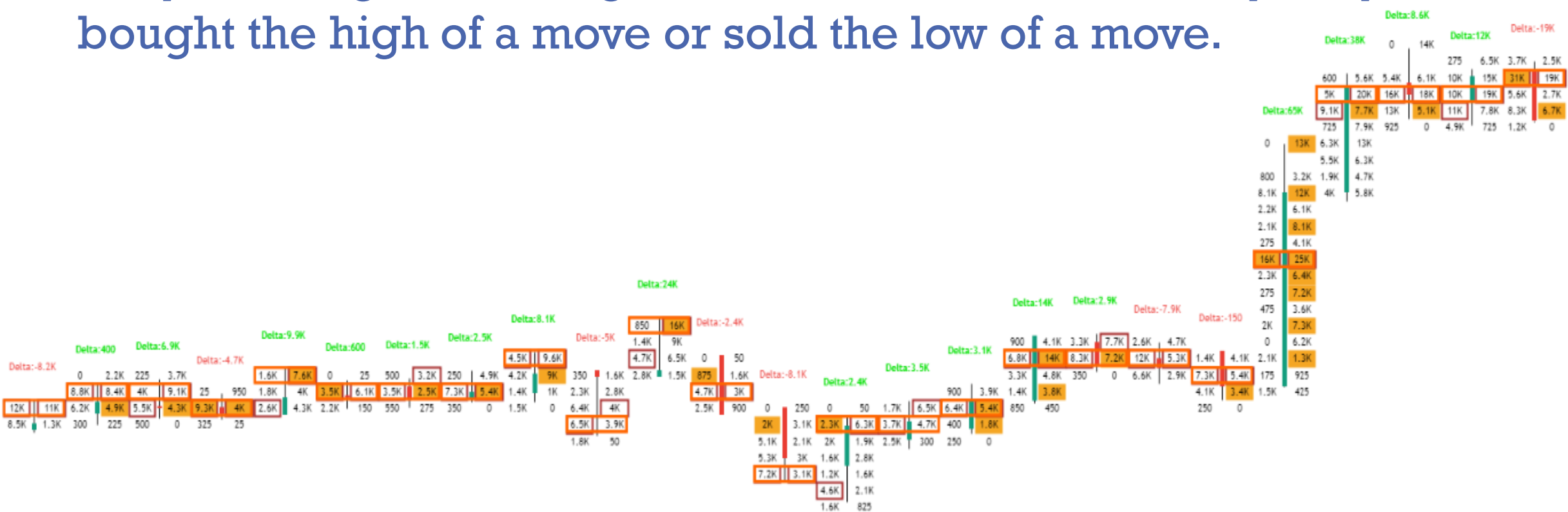


Sometimes they are the result of a sweep or stop run, but can also be caused by momentum. The market often comes back to retest thin prints.

12.78K	13.8K	7.35K	55.98K	24.98K	24.7K	27.78K	22.55K	17.28K	17.18K	54.7K	46.33K	83.6K	37.08K	19.73K	39.83K	16.63K	17.93K	52.18K	14.25K	11.93K	Volume
-1.58K	-2.8K	-350	31.73K	-1.63K	5K	-6.68K	-3.45K	-1.28K	1.93K	32.35K	-16.18K	-19.95K	-3.08K	2.08K	4.98K	-3.58K	6.83K	11.38K	600	-2.08K	Delta ▲
1.43K	425	-25	31.73K	2.23K	5K	900	-275	1.15K	1.93K	32.43K	-975	-550	5.1K	2.08K	6.68K	1.8K	6.83K	11.58K	1.38K	25	Max ▲
-1.58K	-3.75K	-1.75K	-2.35K	-1.98K	-25	-7.85K	-5.63K	-2.05K	-3.88K	-1.4K	-16.18K	-23.9K	-3.68K	-2.43K	950	-3.83K	-1.93K	550	-2.08K	-2.15K	Min ▲
-54.05K	-56.85K	-57.2K	-25.47K	-27.1K	-22.1K	-28.77K	-32.22K	-33.5K	-31.57K	776	-15.4K	-35.35K	-38.42K	-36.35K	-31.37K	-34.95K	-28.12K	-16.75K	-16.15K	-18.22K	Cum ▲
12:25 PM	12 PM	12:35 PM	12:40 PM	12:45 PM	12:50 PM	12:55 PM	01:00 PM	01:05 PM	01:10 PM	01:15 PM	01:20 PM	01:25 PM	1 PM	01:35 PM	01:40 PM	01:45 PM	01:50 PM	01:55 PM	02:00 PM	02:05 PM	0.0



Trapped Traders - Traders who are caught offside in the market. They are long and wrong or short in the hole. Basically, they bought the high of a move or sold the low of a move.



32.95K	31K	27.2K	14.53K	21.78K	11.85K	10.5K	18.18K	31.15K	29.58K	42.98K	13.55K	30.98K	28.68K	19.35K	18.95K	40.25K	26.85K	33.83K	25.85K	142.63K	103.95K	79.4K	85.18K	80K
-8.15K	400	6.9K	-4.68K	9.93K	600	1.45K	2.48K	8.05K	-4.98K	23.63K	-2.4K	-8.08K	2.43K	3.5K	3.1K	13.7K	2.9K	-7.93K	-150	65.43K	38K	8.55K	12.48K	-18.95K
4.13K	8.55K	7.6K	1.13K	11.05K	2.5K	2.58K	5.6K	11.58K	75	24.15K	50	250	3.33K	4.73K	6.18K	13.7K	3.73K	2.95K	650	65.55K	39K	19.63K	17.78K	725
-8.83K	-75	-550	-4.68K	-500	-875	375	-2K	-1.95K	-8.18K	-925	-2.65K	-9.33K	-4.33K	-975	-175	-50	-1.7K	-7.93K	-2.83K	-1.38K	800	-2.85K	-9K	-19.5K
-1.15K	-749	6.15K	1.48K	11.4K	12K	13.45K	15.93K	23.98K	19K	42.63K	40.23K	32.15K	34.58K	38.08K	41.18K	54.88K	57.78K	49.85K	49.7K	115.13K	153.13K	161.68K	174.15K	155.2K
24.73%	1.29%	25.37%	32.19%	45.58%	5.06%	13.81%	13.62%	25.84%	16.82%	54.97%	17.71%	26.07%	8.46%	18.09%	16.36%	34.04%	10.8%	23.43%	0.58%	45.87%	36.56%	10.77%	14.65%	23.69%
01:20 PM	01:25 PM	1 PM	01:35 PM	01:40 PM	01:45 PM	01:50 PM	01:55 PM	02:00 PM	02:05 PM	02:10 PM	02:15 PM	02:20 PM	02:25 PM	2 PM	02:35 PM	02:40 PM	02:45 PM	02:50 PM	02:55 PM	03:00 PM	03:05 PM	03:10 PM	03:15 PM	03:20 PM

43400.00
43380.00
43360.00
43340.00
43320.00
43300.00
43280.00
43260.00
43240.00
43220.00
43200.00
43180.00
43160.00
43140.00
43120.00
43100.00
43080.00
43060.00
43040.00
43020.00
43000.00
42980.00
42960.00

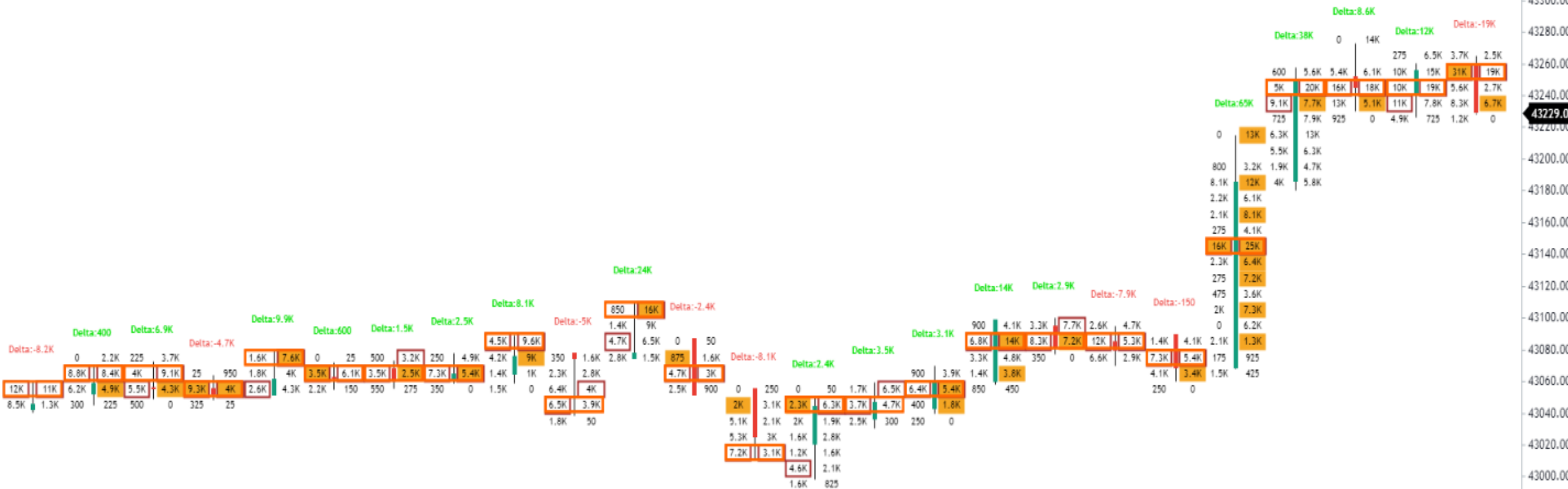
Volume
Delta ▲
Max ▲
Min ▲
Cum ▲
% ▼

Two-Way Auction - The bid-offer of the market. The market is bid at one price and offered at a higher price. The trading that occurs is done via the two-way auction.

Trades		DOM		Orders	
1.08		Grouping: 0.0001		1.08	
Bid	Buy	Price	Sell	Ask	
56		1.0866		53	
		1.0865			
		1.0864			
		1.0863			
		1.0862			
		1.0861			
		1.086			
		1.0859			
		1.0858			
		1.0857			
		1.0856			
		1.0855			
		1.0854			
		1.0853			
		1.0852			
		1.0851			
		1.085			
		1.0849			
		1.0848			
		1.0847			
	1.0846				
	1.0845				
	1.0844				
	1.0843				
	1.0842	149			
	1.0841	110			
	1.084	703			
	1.0839				
	1.0838				
	1.0837				
	1.0836				
	1.0835				
	1.0834				
	1.0833				
	1.0832				
	1.0831				
	1.083				



Volume - The number of contracts traded in a bar and the number of contracts traded for the session.



32.95K	31K	27.2K	14.53K	21.78K	11.85K	10.5K	18.18K	31.15K	29.58K	42.98K	13.55K	30.98K	28.68K	19.35K	18.95K	40.25K	26.85K	33.83K	25.85K	142.63K	103.95K	79.4K	85.18K	80K
-8.15K	400	6.9K	-4.68K	9.93K	600	1.45K	2.48K	8.05K	-4.98K	23.63K	-2.4K	-8.08K	2.43K	3.5K	3.1K	13.7K	2.9K	-7.93K	-150	65.43K	38K	8.55K	12.48K	-18.95K
4.13K	8.55K	7.6K	1.13K	11.05K	2.5K	2.58K	5.6K	11.58K	75	24.15K	50	250	3.33K	4.73K	6.18K	13.7K	3.73K	2.95K	650	65.55K	39K	19.63K	17.78K	725
-8.83K	-75	-550	-4.68K	-500	-875	375	-2K	-1.95K	-8.18K	-925	-2.65K	-9.33K	-4.33K	-975	-175	-50	-1.7K	-7.93K	-2.83K	-1.38K	800	-2.85K	-9K	-19.5K
-1.15K	-749	6.15K	1.48K	11.4K	12K	13.45K	15.93K	23.98K	19K	42.63K	40.23K	32.15K	34.58K	38.08K	41.18K	54.88K	57.78K	49.85K	49.7K	115.13K	153.13K	161.68K	174.15K	155.2K
24.73%	1.29%	25.37%	32.19%	45.58%	5.06%	13.81%	13.62%	25.84%	16.82%	54.97%	17.71%	26.07%	8.46%	18.09%	16.36%	34.04%	10.8%	23.43%	0.58%	45.87%	36.56%	10.77%	14.65%	23.69%
01:20 PM	01:25 PM	1 PM	01:35 PM	01:40 PM	01:45 PM	01:50 PM	01:55 PM	02:00 PM	02:05 PM	02:10 PM	02:15 PM	02:20 PM	02:25 PM	2 PM	02:35 PM	02:40 PM	02:45 PM	02:50 PM	02:55 PM	03:00 PM	03:05 PM	03:10 PM	03:15 PM	03:20 PM

43400.00
43380.00
43360.00
43340.00
43320.00
43300.00
43280.00
43260.00
43240.00
43229.05
43220.00
43200.00
43180.00
43160.00
43140.00
43120.00
43100.00
43080.00
43060.00
43040.00
43020.00
43000.00
42980.00
42960.00

Volume
Delta ▲
Max ▲
Min ▲
Cum ▲
% ▼

Now you know the most commonly used terms in order flow as well as the foundations of order flow. Now you can start to put them to use in your own analysis.

This concludes Lesson 4.

In Lesson 5, you will learn how to read the market with order flow. By now you should have a good understanding of the important aspects of order flow and you will learn how to put it all together to analyze the market with order flow.