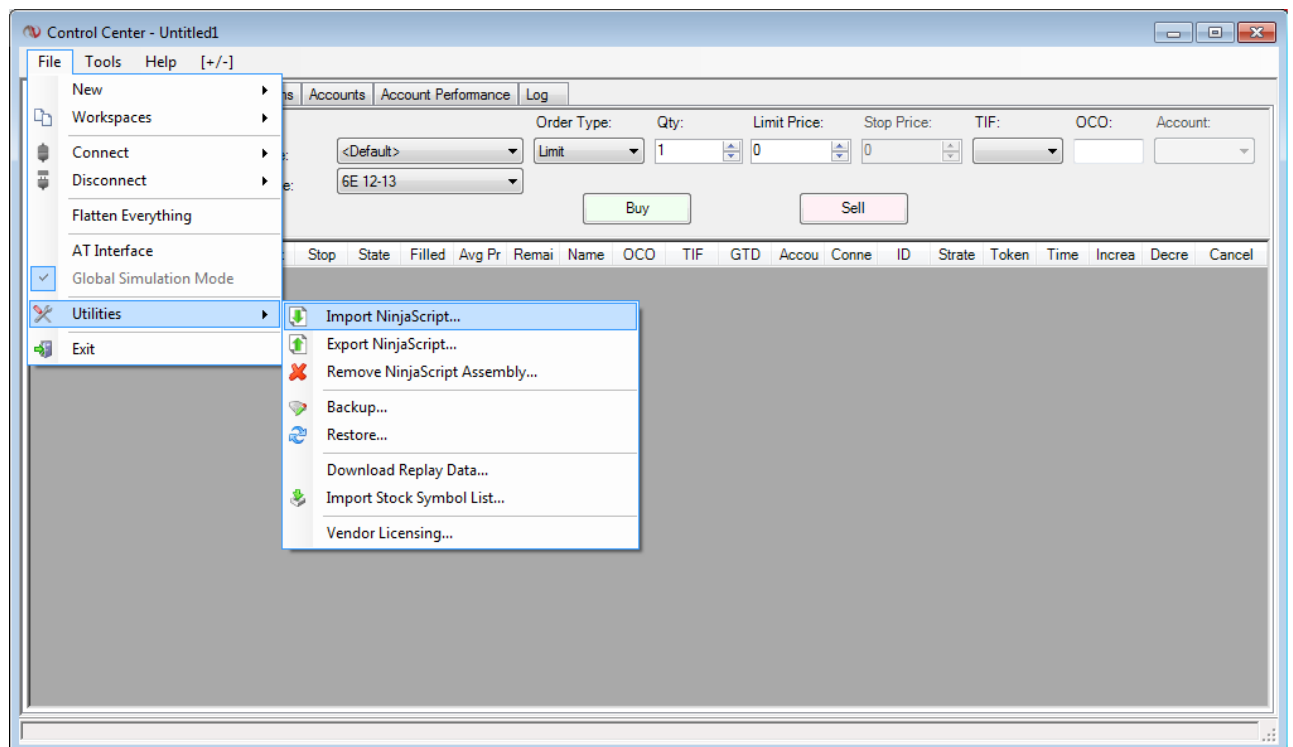


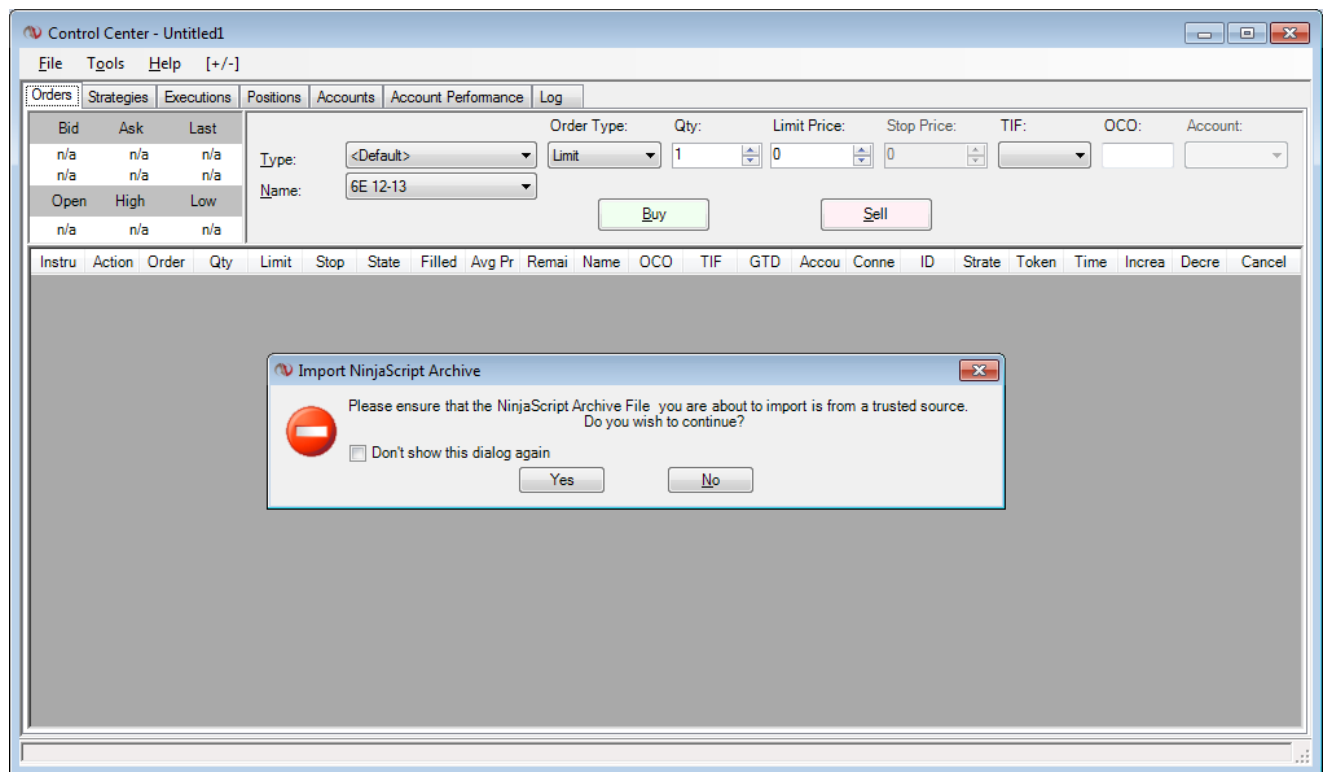
How do I install Orderflows Delta Candles?

To install Orderflows Delta Candles, please follow these steps.

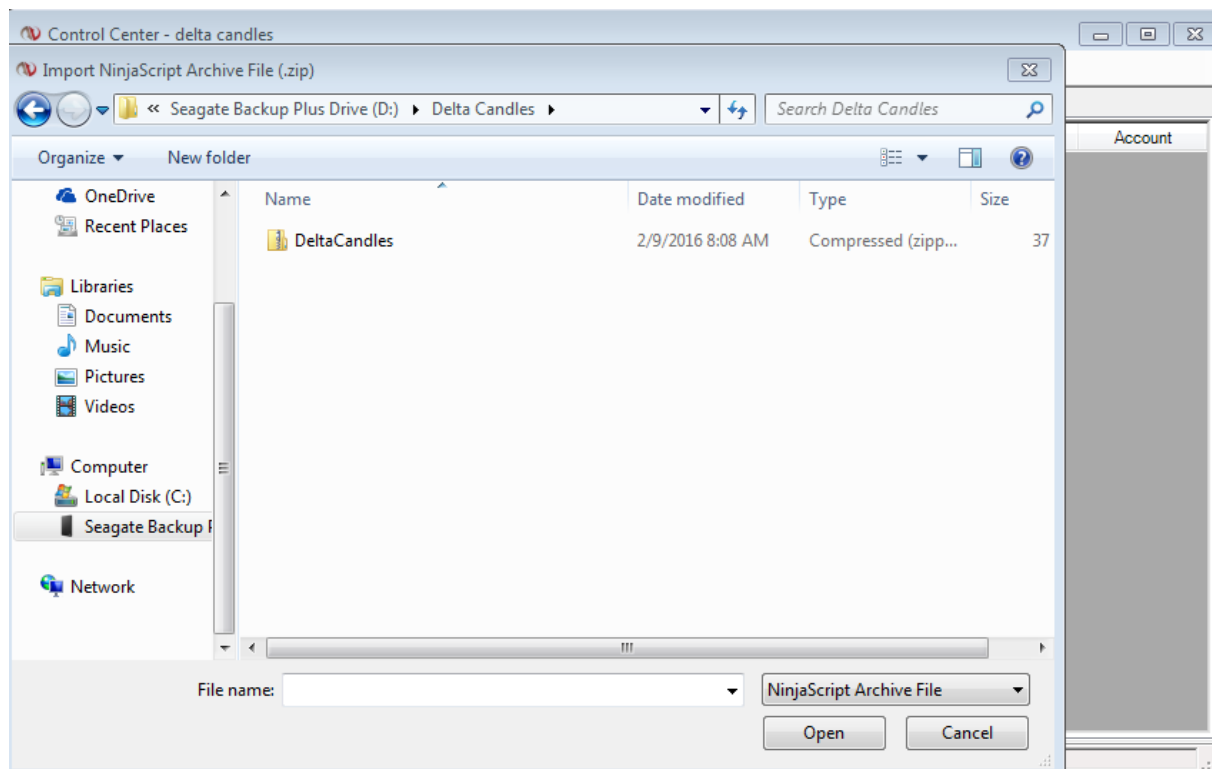
1. Download the indicator and store the .zip file on your hard disk. DO NOT UNZIP or OPEN the .zip file.
2. Start your platform if not already running and click on the File > Utilities > Import NinjaScript... menu entry.



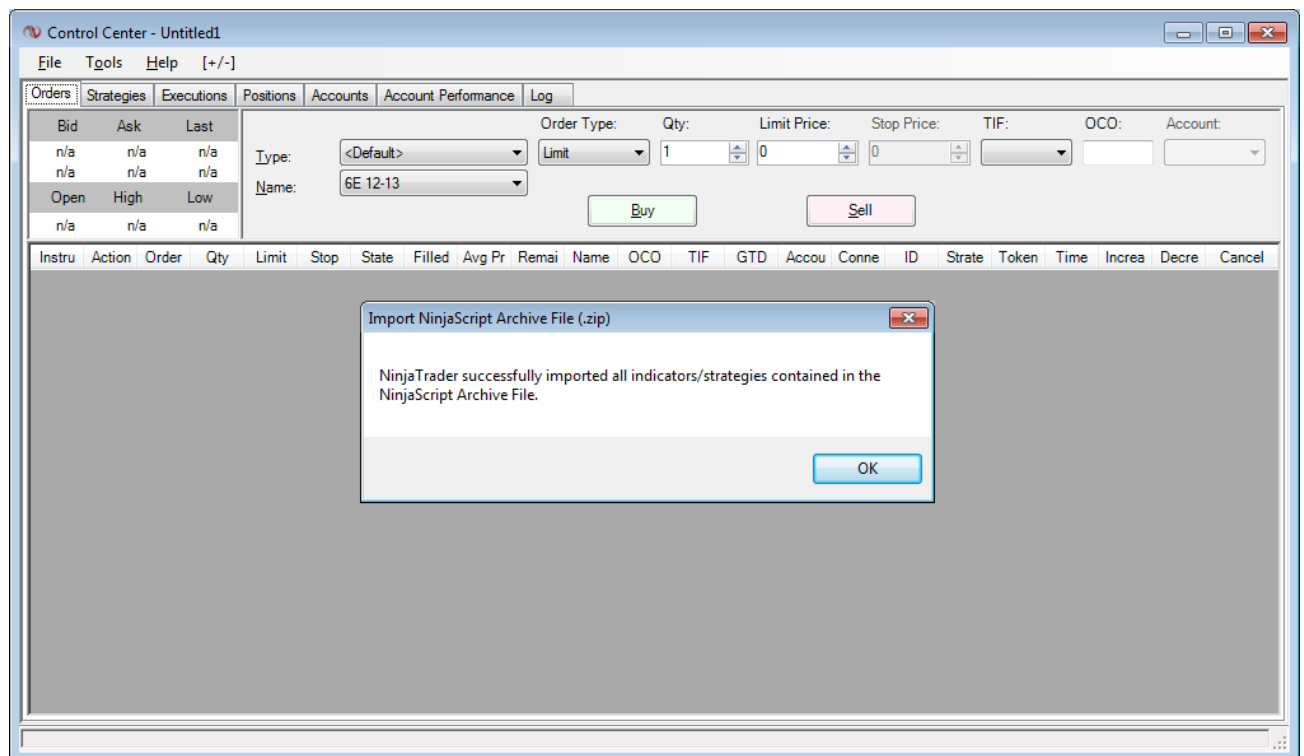
3. If a check for trusted source appears, click Yes.



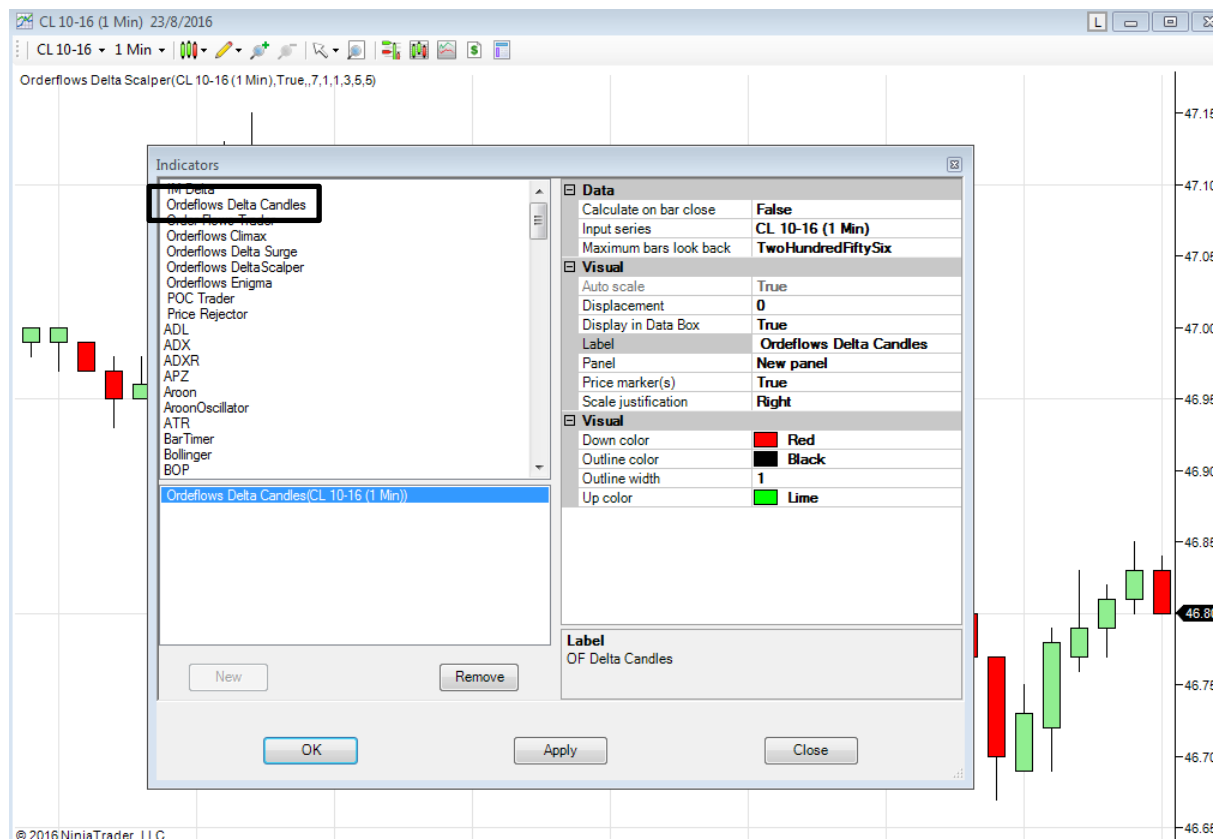
4. This will bring up the file selection window. Find the downloaded indicator file (e.g, DeltaCandles.zip), click on it and click on Open.



5. Wait for success confirmation



6. From now on, you will find the indicator at the top of the Indicator window. It is called OrderFlows Delta Surge. You can easily insert it in the chart window in the same way as the preinstalled indicators.



7. After importing to NinjaTrader, please restart NinjaTrader – Very Important.